



Behringer Pro-800 Ctrlr panel documentation and instructions

V1.0- 2023-12-03



Introduction

Hi! Thanks for having purchased this Ctrlr Behringer Pro-800 panel!

The panel is an editor and librarian for the Behringer Pro-800 and will give you access to all the parameters at program level including trickier ones like the Unison modes.

Besides the editor, you will also benefit from a complete librarian. It will allow you to manage an image of the content of your Pro-800 but also two “disk” banks that are banks located on your PC. From there you can perform different program operations between the banks (copy, swap, initialize, move and multi-copy) but also perform a morphing between the current program and a destination program with parameters locking.

The editor and the librarian can handle both the old and the new sysex file format.

The panel has a look and feel close to the one of the Pro-800 but, it would be stupid to not benefit of the computer possibilities. Therefore, you also get a display of the current and saved parameters value, a graphic display/handling of the envelopes but also a direct access on the main tab to the presets loaded in one of the 3 banks.

Despite careful testing, it is possible that some bugs remain. Please contact sunny.synths@gmail.com if you find one so they can be corrected as soon as possible.

In the same spirit, contact sunny.synths@gmail.com if you would like some enhancements.

By that, please have a look on this manual to have an idea of the way of using it and its features. Enjoy making music with your Behringer Pro-800 and have fun!

Thanks a lot to Sebastian for his advices and great help on testing this panel ;-)

Sunny Synths

About this v1.0 version

This is the first version of this panel.

Table of Contents

Introduction	2
About this v1.0 version	2
Installation and features	5
Installation of the Pro-800 panel.....	5
Features	6
Communication with your Pro-800 synth	7
Connection setup for the Pro-800 module and the standalone version of the panel	7
About the connection to the synth.....	8
Testing the Midi connection	8
Quick start guide	9
Direct mode.....	9
Save a program as sysex dump file on your computer	9
Load a program (sysex dump file) from your computer	9
Load a bank from your disk and select programs	9
Receive a bank from your Pro-800	10
Way of working and top panel functions	11
Using the buttons and modifying parameters	11
Quick reset to default value	11
Opening and closing the panel	11
Top panel area.....	12
Loading and Saving programs from the main area of the panel	13
Introduction	13
Loading programs.....	14
Saving programs	17
Direct Mode, Receive and Send	20
Direct mode.....	20
Receive and Send	21
Program Init and Rename	22
Program Init.....	22
Program Rename.....	23
Main parameters tab	24
Program select area	24

XY pad area.....	25
Pro-800 synth parameters area.....	25
Program Info and Panel Settings tab	27
Additional parameters.....	27
Current program’s additional info	27
Panel and Global settings	28
Display and Export info.....	29
The librarian.....	30
Librarian and Morphing tab.....	30
Bank files concept	30
Bank management actions	31
Program management actions	34
Program morphing	39
Installing and using the Pro-800 panel as plugin	40
Installation.....	40
Midi setup when using the panel as plugin	41
Tests and identified limitations	42
Cubase.....	43
Cakewalk by Bandlab.....	47
Reaper	49
Ableton.....	53
Studio One.....	55
Logic Pro X.....	57
The main Ctrlr menus	60
Appendix	61
Version history	61
Pro-800 information.....	61
Specific MacOS setup issues.....	61
Using Midi-OX to download your Pro-800 content	62

Installation and features

Installation of the Pro-800 editor

The panel is provided as a compressed .zip file containing:

- the Behringer Pro-800 panel as an .exe file on Windows PC
- the Behringer Pro-800 panel as an .app file on Mac OS (zip folder to be uncompressed)
- the Behringer Pro-800 panel as VST2 and VST3 64 bits for Windows PC
- the Behringer Pro-800 panel as VST and AU plugins for Mac OS
- this manual as PDF

For the PC standalone version, decompress the zip file anywhere on your PC then copy the **Behringer Pro-800.exe** file in some directory and launch it. The file may be scanned by your antivirus program (Avast on my computer) and should return no issue. If any, they are false and probably due to the fact that the program is not officially referenced.

For the Mac OS standalone version, you should use a program like “The Unarchiver” to decompress the zip file anywhere on your Mac. You may have to open the **Behringer Pro-800.app** file using Ctrl+click as it may not be recognized by the OS.

On Mac you may also do either `chmod +x Contents/MacOS/*` on the package contents or need to go to [System Preferences](#) then [Security and Privacy](#) and to click on the [Open anyway](#) button to have the package/plugin saved as an exception in the security settings.

The program will directly display the Ctrlr window with the Pro-800 panel showing its main tab indicating the panel version and if the communication with the synth has been established or not.



It is possible that the top row buttons are not responding after the initial installation (first try the Init button for ex.). Simply close the program and restart it. The issue should be solved.

For the installation of the plugins, please refer to [Installing and using the Pro-800 panel as plugin](#) on page 40 further in this manual.

Features

You will find the following features in the Behringer Pro-800 panel:

- Behringer Pro-800 interface with same look as actual synthesizer
- Top row of support “screens” with old look displaying the current program name and category, current parameter name, actual and saved values
- Rotary buttons with colored ring
- Switches with same look as synth
- Bi-directional behavior: modifying a parameter on the panel modifies it on the synth; modifying a parameter on the synth modifies the panel
- Envelopes graphs handled by mouse or classical ADSR rotary encoders
- Linear and exponential curves
- Handling of the different Unison modes and of the Unison Chord intervals
- XY pad for simultaneous control of 2 parameters
- Load / Save programs from banks or from individual .syx files
- Load old format individual .syx files
- Access to any bank of 400 programs directly on the main panel
- Uses the A00 as program buffer as for the moment there is no command to Receive/Send from/to the Pro-800 edit buffer
- Direct mode to change programs on the synth
- Easy program renaming
- Ability to morph between the current program and any other program with parameter locking
- Display and export of program parameters (current values, differences with the Init program) as text file
- Programs have a name, category, author, save date and description
- Complete librarian providing handling of 2 disk banks and one “Pro-800” bank (400 programs by bank). The “Pro-800” bank can be received/sent from/to the actual synthesizer.
- Reads banks containing old sysex format presets and with missing (empty) presets
- Load any number of programs(or just A-D banks) as full 400 programs bank
- Save the A-D banks separately or the complete 400 programs bank
- Operations in banks for programs: rename, init, copy, multi-copy (as-is/collated), move, swap programs
- Different switches to modify the behavior of the panel according to your way of working
- Panel zoom with memory

Communication with your Pro-800 synth

Connection setup for the Pro-800 module and the standalone version of the panel

You can connect your Pro-800 module, a controller and your computer in different ways but this is the most standard one.

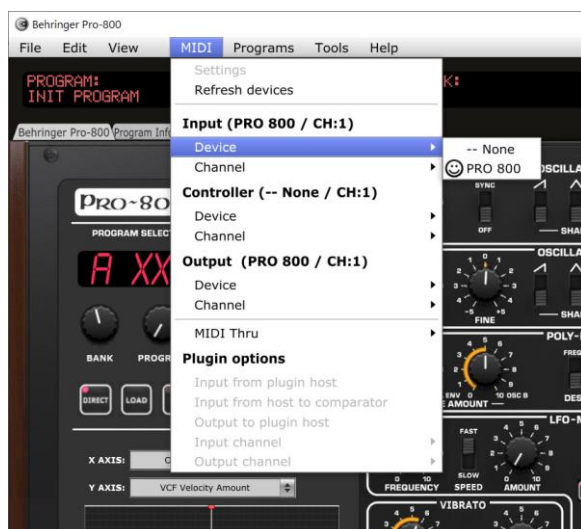


- Connect the Pro-800 to the computer by USB or Midi DIN
- Power the Pro-800 On
- Start the Pro-800 panel
- In the **Midi** menu, select **Input – Device Pro-800**
- In the **Midi** menu, select **Input – Channel 1** (set this to the Midi channel of your Pro-800, **not on 0**)
- In the **Midi** menu, check that **Controller – Device** is set to *None*
- In the **Midi** menu, select **Output – Device Pro-800**
- In the **Midi** menu, select **Output – Channel 1** (set this to the Midi channel of your Pro-800).
- In the **Midi** menu, select **Midi Thru – Input Device -> Output Device**. This is done to send the received parameters changes and notes from your master controller/keyboard to the synth
- **IMPORTANT:** close the panel and re-open it



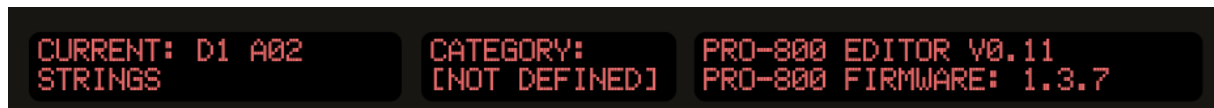
It is needed to close and re-open the editor each time the Midi Input channel of the editor is changed (thus, the output channel of the synth).

The panel is maintaining those settings from one session to the next one.



About the connection to the synth...

At opening, the panel is sending a message requesting the firmware version of the synth (the standard Device Inquiry midi message is not available on the Pro-800). If the expected answer is coming from the synth then the parameter LCD screen is showing that the synth is connected by indicating the firmware version.



If it is not connected (response not received), then the parameter LED screen is indicating “No Connection to the Pro-800”.



Testing the Midi connection

We can now test the Midi connection:

- Press some keys on your keyboard and confirm you get some sound from the Pro-800. If not, check your audio, check if Midi Thru is activated
- In the **Tools** menu, select **Midi monitor** and in the new monitor popup check **On Monitor input** and **Monitor Output** in the **View** menu



We can now test the Midi connection:

- In the panel, turn the Filter Attack rotary button and check that the Pro-800 LCD indicates the change and that the attack of the current sound is changing by playing a few notes or a chord
- On the Pro-800, turn the Filter Attack rotary button and check that the corresponding rotary button is moving in the panel
- Verify the Midi input (green area) and output (red area) in the Midi monitor

If wished, you can also test the switches or other buttons.

Quick start guide

Now that you have an idea of the features of the panel and have established the connection with the synth, let's go quickly through a few things you can try.



Unless explicitly specified, a bank of the editor means the 400 programs of the Pro-800 banks A, B, C and D banks.



As there is no sysex command to directly address the Edit buffer (at the moment), the A00 preset slot is used as Edit buffer. Make a backup or copy that program somewhere else as A00 will be overwritten by some operations.

Direct mode

The Direct mode provides a direct interaction with the synth for program changes

- Switch the **Direct** mode button at the left of the first tab to ON (the Direct mode button is only active if you have a connection with your Pro-800 synth)
- Use the **Bank** and **Program** rotaries to select a program preset. Its name is unknown by the panel so you need to look at your synth. When the program changes, all parameters are adapted based on CC messages received from the synth
- (optional) Click on the **Load/Receive** button to request the actual program from the synth and receive the program from the synth into the panel. If you perform this action, the name of the preset will be known by the editor
- Modify some parameters
- If you press **Save**, the preset on the synth is replaced with your changes

Save a program as sysex dump file on your computer

- Set the **Program** rotary to the far right (position 100) which is the position to export as a single file
- Unless the current program is coming from a loaded sysex dump file, click on the **Save As** button to save the file on your computer

Load a program (sysex dump file) from your computer

- Click on the **Load .syx** button to load a program from your computer
- Select the sysex file you saved in the previous exercise
- The file will be loaded in the panel and sent to the A00 preset of the synth which is used as edit buffer (there is, at the moment, no commands to send/receive to/from the Pro-800 edit buffer)
- A program change to A00 is also issued
- Listen and change parameters

Load a bank from your disk and select programs

- Go to the Librarian and Morphing tab
- Click on the Disk 1 header just above the Disk 1 list of programs. This is the way to select a bank
- Select **Load sysex bank dump** in Bank action then press on the **Proceed** button
- Select the *PRO-800 FACTORY BANK A_NewFormat.syx* file provided. It contains the factory programs of the synth bank A
- Left click on any program in the list to select it as source

- Select **Load from bank into Pro-800 A00** in the Program action pulldown then press on the **Proceed** button
- (optional) Go back to the [Main parameters](#) tab
- Switch the **Direct** mode to OFF to enable the selection of other sources than the synth
- Press the **Disk 1 button** to select the Disk1 bank as source
- Use the **Bank** and **Program** rotaries or scroll and click in the list box to select a program from the Disk 1 bank
- Press **Send** to send it to the synth preset A00 used as edit buffer
- Or press **Load/Receive** to load from the Disk1 bank in the editor and to send it to the synth preset A00 used as edit buffer
- Listen and change parameters
- (optional) Use the **Bank** and **Program** rotaries to select another program slot (1-400)
- Press **Save As** to save the program in the bank at the selected program slot

Receive a bank from your Pro-800

- Go to the Librarian and Morphing tab
- Double click on the **Transfer Speed** rotary to set it to its default value (80ms)
- Click on the Pro-800 header just above the Pro-800 list of programs. This is the way to select the full content of the Pro-800
- Select **Receive from Pro-800** in Bank action then press on the **Proceed** button
- Wait that the middle LED display indicates 100% progress
- Save the new bank on your computer under a name by selecting **Save to disk** in Bank action then pressing on the **Proceed** button
- You can now perform program operations between the Disk 1 bank loaded and the programs on your Pro-800. All changes are reflected on the disk bank images stored on your computer and sent to the Pro-800
- If there is an error on receiving programs, you have the possibility to save the dump anyway for analysis. You may retry the Receive by setting the Receive/Send timing to higher values
- For program operations, left click to select a source program; right click to select a destination one
- You can now also directly select programs from your Pro-800 by clicking on the **Pro-800 button** in the [Main parameters](#) tab and using the **Bank** and **Program** rotaries to load a program (with double-click the program is directly loaded; otherwise you need to press the Load button)

Way of working and top panel functions

As you will discover by yourself, the main usage of the panel is straightforward but there are anyway different specific things you should know... ☺

Using the buttons and modifying parameters

You modify parameters using a rotary buttons by keeping the left mouse pressed and moving the mouse cursor vertically up or down. Clicking on a rotary button displays the parameter name, its current and last loaded/saved values (if a program has been loaded).

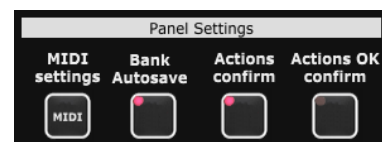


You can also more precisely modify any rotary encoder based parameter by doing a mouse hover on the button then using the mouse scroll wheel.

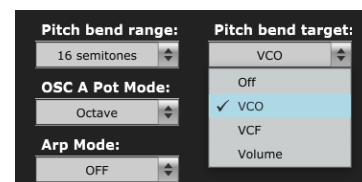
Clicking on switches modifies their position. There is no left/right; up/down effect; just a simple toggle between the two or three positions. Clicking on the label of a switch displays the parameter information, its current and saved values.

Clicking on momentary push buttons is activating them briefly (what a surprise...). They will momentarily display the button's label in red.

Clicking on permanent toggle buttons (like the bank ones) is activating their LED (what a surprise...). They will stay ON until the next click.



Parameters presented as pull-downs are modified by opening the pull-down and selecting one of the pull-down items. Clicking on the label of a pull-down menu displays the parameter name, its current and last loaded/saved values (if a program has been loaded).



Quick reset to default value

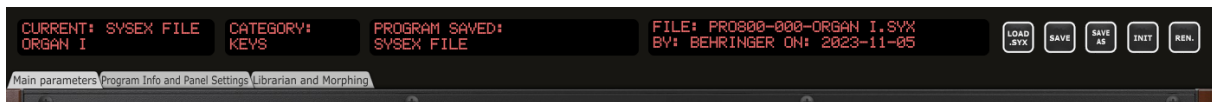
Rotary encoders have default values set and you can quickly revert to this preset default value by double-clicking on the button. Try with the Filter Env Amount or any of the Filter ADSR buttons.

Opening and closing the panel

When closing the panel (either by using **File – Quit** or by clicking on the upper right red cross) the state of the panel is stored.

When opening the panel, a Welcome message indicating the panel the panel version and the status of the connection with your Pro-800. The panel should be in the state you left it (same zoom level, same loaded banks if not moved, same buttons positions...). Pay of course attention that the panel may not reflect your Pro-800 buffer in the case you have been using your synth without the panel.

Top panel area



In the top panel area you find 4 feedback LCD screens, 5 buttons and 3 tabs:

- The first screen displays the **name** of the current loaded program
- The second screen displays the **category** of the current loaded program
- The third one indicates the parameter currently modified, its current and last loaded/saved value
- The fourth one displays the latest sysex file or bank file loaded, its author and the save date
- The **Load .syx** button allows loading a sysex file from disk
- The **Save** button saves the current program to the same place it has been loaded from (so, sysex file if the last loaded program comes from a sysex dump, the same bank preset slot if the last loaded program comes from a bank, the Pro-800 synth's preset slot if the program comes from the Direct mode)
- The **Save As** button allows saving to a different location than the loaded one (this must be selected prior pushing the button by selecting a source bank and setting the Bank and Program rotaries as needed; setting the Program rotary to 100 allows saving a sysex file)
- The **Init** button reset all parameters to an *Init program*
- The **Rename** button allows renaming the current program
- The **Main parameters** tab displays the synth and provides a quick access to the content of the different banks for quick loading of programs. It also provides the XY-Pad
- The **Program Info and Panel Settings** tab is used to manage the Additional parameters and some panel settings. It also allows modifying the category, the author and the description of the current program. You will also find the detailed values of the parameters of the current program and the About info of the panel.
- The **Librarian and Morphing** tab contains the librarian. It allows you to perform different program operations on up to 3 banks of 400 programs (move, copy, swap, initialize...). It is also there that you can perform a morphing between the current program and a program chosen as destination

Loading and Saving programs from the main area of the panel

Introduction

The Pro-800 editor and librarian provides the handling of individual sysex dump files, of banks of 400 programs and of individual presets.

You have **2 Disk banks** and **1 Pro-800 bank** available. Each bank consists in 400 programs corresponding to a complete content of the Pro-800 synth (100 programs in A, B, C and D banks)

The Disk 1, Disk 2 and Pro-800 have short names when shown in the LED displays: D1, D2 and P8.

The left area of the panel allows selecting the source bank, the current A-D bank and program so you can perform different program operations afterwards whereof Load and Save.



The **Disk 1**, **Disk 2** and **Pro-800** buttons let you select the current bank among Disk1, Disk2 and Pro-800:

- The Dx banks are Disk banks and are banks loaded in the panel but only existing on the computer
- The idea with the Pro-800 bank is that it should reflect the content of your Pro-800

The **Bank** and **Program** rotary buttons let you select the current program:

- The center LCD screen will show Program Select: A-D bank and the program number (00-99)
- When the **Program** button is set to Program 100, whatever bank, a Pro-800 sysex dump file Load/Save can be performed

Scrolling and doing a single click in the list is also selecting a program prior pressing on Load.

Scrolling and doing a double click in the list is directly loading the corresponding program.

Load and Save operations are possible when a program has been selected (some checks are done 😊).

In Direct mode (see after), the Load button is becoming a **Receive** button: the selected program is requested and received from the preset slot of the synth.



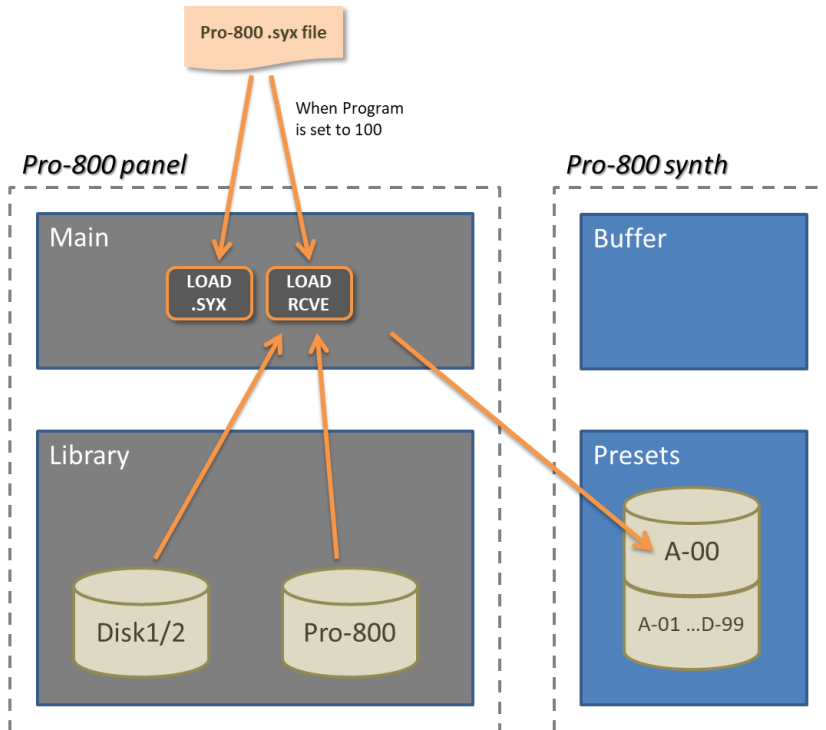
As there is no sysex command to directly address the Edit buffer (at the moment), the A00 preset slot is used as Edit buffer. Make a backup or copy that program somewhere else as A00 will be overwritten by some operations.

Loading programs

The **Load .syx** button offers the possibility to load a single Pro-800 program .syx file in the editor.

The **Load** button offers the following possibilities and works as follows:

- Load a single Pro-800 program .syx file in the panel (when the Program rotary is set on 100)
- Load a program from the D1, D2 banks (if loaded)
- Load a program from the Pro-800 bank (if loaded)
- If coming from Disk ½, the loaded program is sent to the Pro-800 A-00 preset
- If coming from the Pro-800 bank, a program change is done on the synth



You need to first select the “source” bank of 400 programs by pressing one of the **Disk 1**, **Disk 2** and **Pro-800** buttons. Then, adjust the **Bank** and **Program** rotaries at will.

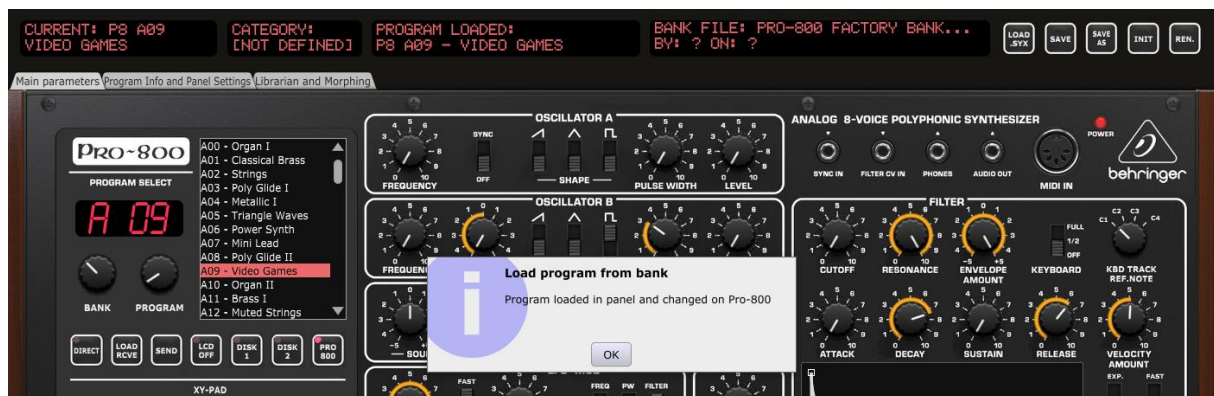
In this example, the current loaded program is *Organ I*. The Pro-800 factory bank is selected and the Bank and Program have been adjusted to select the program *P8 A09 Video Games*



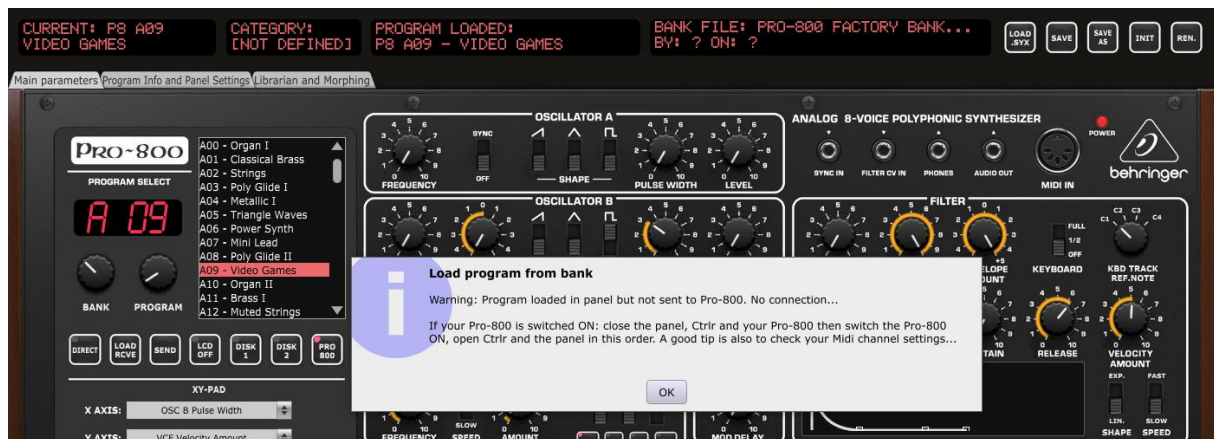
When pressing the **Load** button, the following confirmation is asked (the confirmation popup can be switched off by changing **Actions Confirm** the [Program Info and Panel Settings](#) tab):



After the Load in the editor, the LCDs are adapted and the program is sent to the Pro-800 A00 preset (if coming from Disk1/2 banks) or a program change is done on the synth (if coming from Pro-800) and a confirmation is displayed (the confirmation popup can be switched off by changing **Actions OK Confirm** the [Program Info and Panel Settings](#) tab)



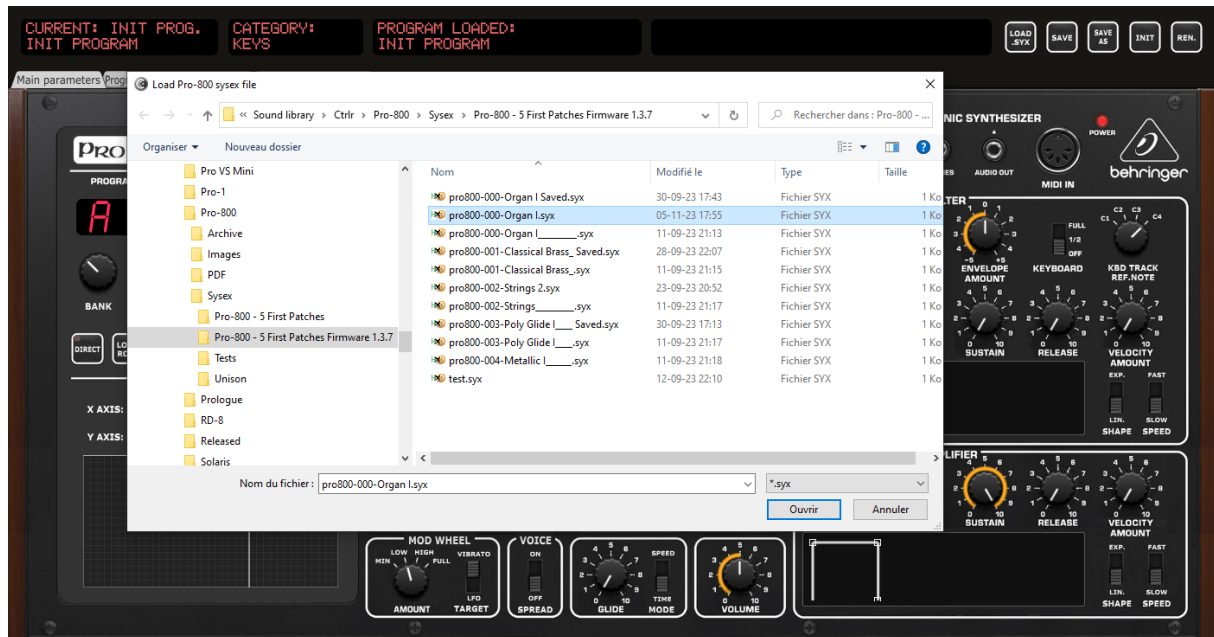
If there is a problem in the connection to the Pro-800, then the program is loaded in the panel but not in the Pro-800 buffer and the following message is displayed:



Loading a program dump sysex file

A program dump sysex file can be loaded in two ways:

- By using the **Load .syx** button
- By turning the **Program** rotary completely to the right side at position “100 then pressing the **Load Rcvr** button:



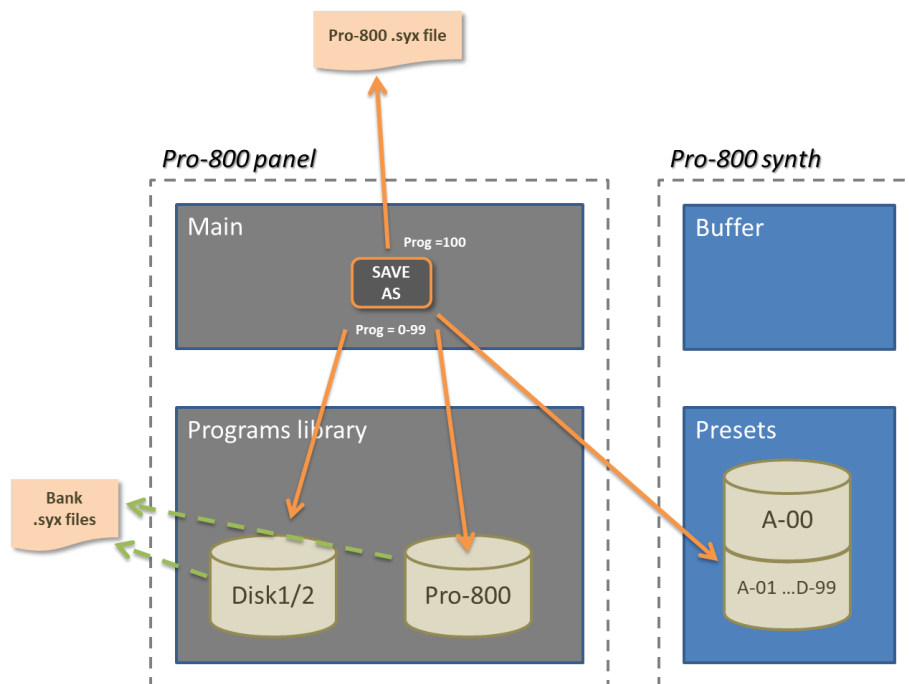
The editor is capable of loading the old variable format sysex dump files (created prior firmware 1.3.7) as well as, of course, the new fixed format.

Saving programs

The **Save** button is saving the current program at the same location where it has been loaded from. For an Init program, the Save button is doing a “Save As”.

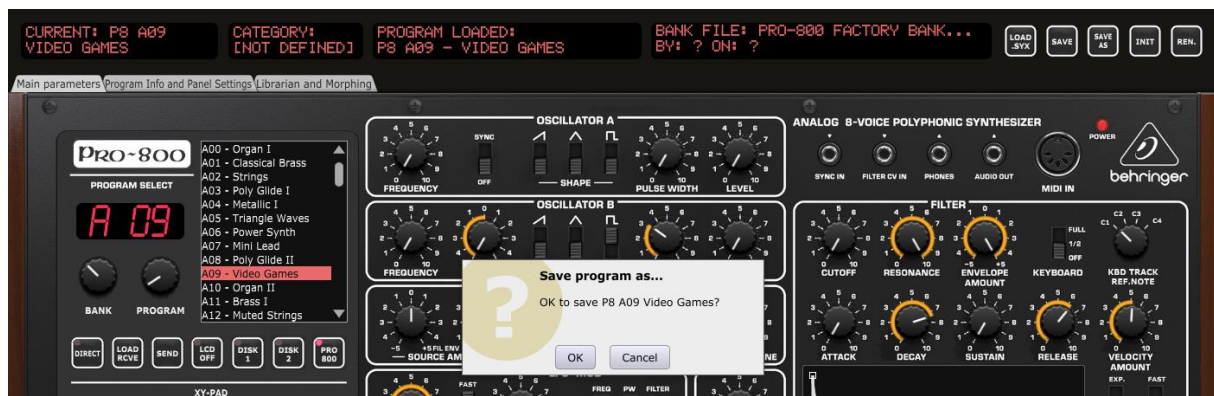
The **Save As** button allows saving the current program at other locations than where it has been loaded from. It offers the following possibilities and works as follows:

- Save the current program to a .syx program dump file (Program rotary to be set to position 100)
- Save the current program to the D1, D2 banks (if loaded)
- Save the current program to the Pro-800 bank (if loaded)
- When saved in a bank, the corresponding bank file is also updated on the computer (when BankAutoSave is On – this can be set in the [Program Info and Panel Settings](#) tab)
- When saved in the Pro-800 bank, the program is also saved in the corresponding Pro-800 preset



When saving a program the complementary information (description, category, save date and author) is also saved on the disk (in a separate “_AddInfo.esx” file).

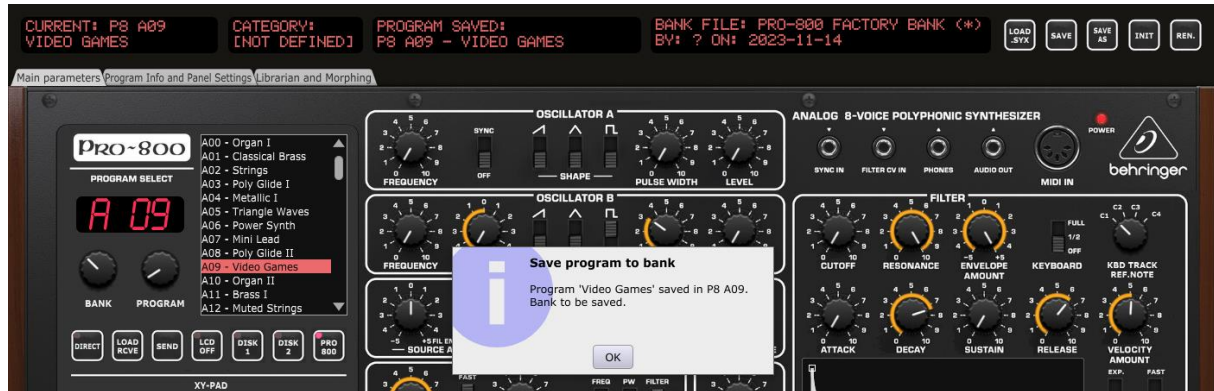
When pressing the **Save** or **Save As** button, the following confirmation is asked (the confirmation popup can be switched off by changing **Actions Confirm** the [Program Info and Panel Settings](#) tab):



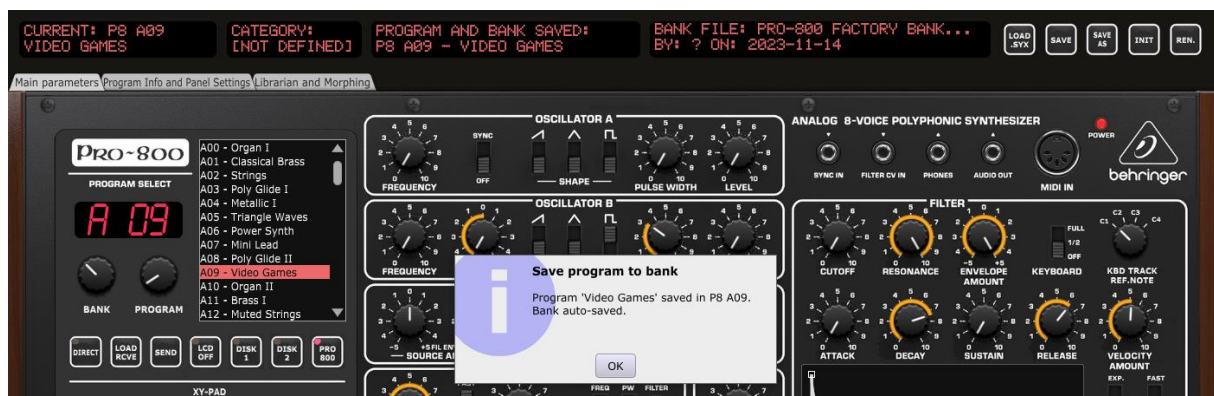
After the Save, the LCDs are adapted and a confirmation is displayed (the confirmation popup can be switched off by changing **Actions OK Confirm** the [Program Info and Panel Settings](#) tab).

The File LCD is indicating the Save date and, when the program is coming from a bank, if the bank has been saved or not.

In this example, BankAutoSave is off, the bank file has not been saved and this is indicated by the (*) at the end of the bank file name. The parameter LCD indicates “Program saved”.



In this example, BankAutoSave is on; the bank file has been saved. The parameter LCD indicates “Program and Bank saved”.



Saving at a different location than the one the program has been loaded from

To save a program at a different location than the one the program has been loaded from, you need to **first** select the source bank, the A-D bank and the program **before** pressing the **Save As** button.



Positioning the Program rotary to the “100” position allows to save as sysex program dump file (see here, just after).

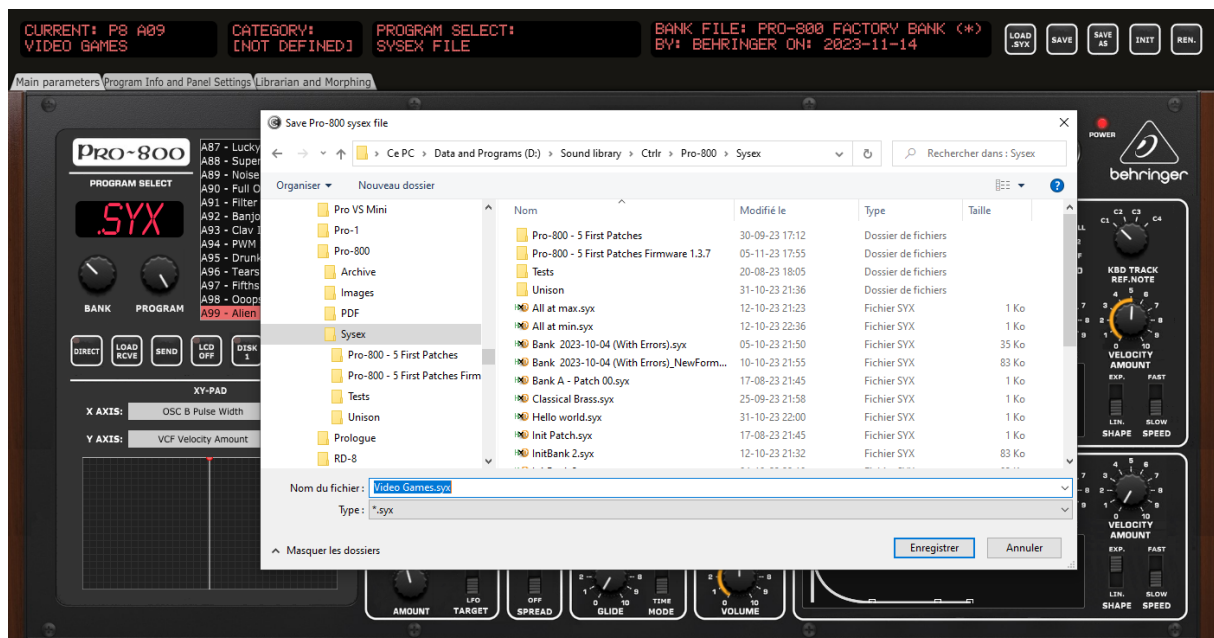
Saving a program dump sysex file

To save to a sysex dump file a program loaded from a sysex dump file, just press the **Save** button.

To save to a sysex dump file a program loaded in a different way from sysex:

- Position the **Program** rotary to the max right at position 100. The parameter LCD will show *Program Select: Sysex File* and the small LCD will show **.SYX**
- Press the **Save As** button to open the File dialog

After the Save, the LCDs are adapted and a confirmation is displayed (the confirmation popup can be switched off by changing **Actions OK Confirm** the [Program Info and Panel Settings](#) tab).

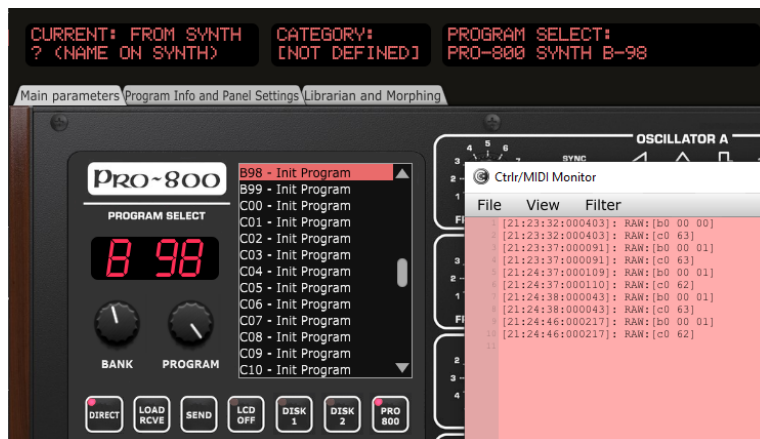


Direct Mode, Receive and Send

Direct mode

The Direct mode allows sending program changes to the synth.

When Direct Mode is ON, turning the Bank or Program rotary buttons to directly send a Program change message to the synth (if the synth is connected). When this is done, the synth sends back CC messages to the editor and all parameters are set as on the synth.



The parameter LCD is showing the selected program on the Pro-800 synth.

The current program LCD is showing the preset number and "From Synth" to indicate that all the current parameters have the values as on the synth.



As one can see, the name of the current program is unknown because the actual preset file has not been requested and been loaded. There has only been a Program Change done. If needed, use the **Load Rcvr** button to perform the actual Receive of the program.

In Direct mode, the Pro-800 bank is selected:

- If the Pro-800 bank is loaded, the corresponding preset will be highlighted. If the Pro-800 bank is out of sync, it may correspond to another program.
- If the Pro-800 bank is not loaded then nothing will happen.

As mentioned, there has been no Load and thus the editor has no clue about the actual name of the program. Pressing the **Load Rcvr** button is performing a "Receive". So after changing the program, you can press the Load/Receive button to be sure to receive the actual preset file. In that case, it will be loaded in the panel with the correct name.

You can also **single click** on a preset in the Pro-800 bank if it is loaded. This is selecting the program but not loading it. Press the **Load Rcvr** button to actually get the program. This feature allows selecting programs which are not close to the current program

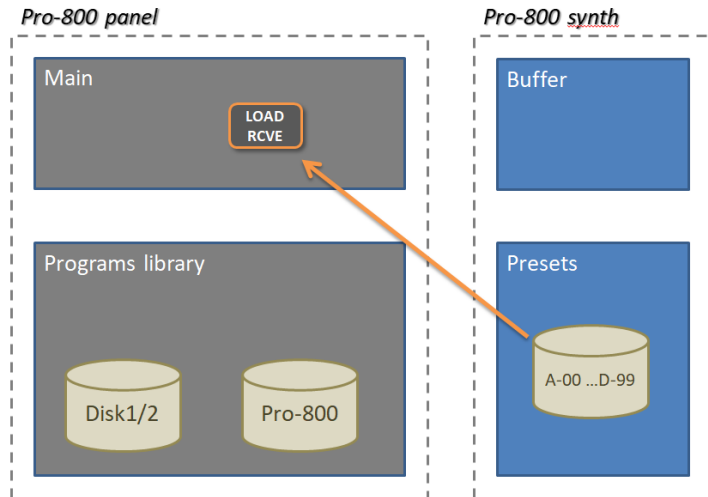
You can also **double click** on a preset in the Pro-800 bank if it is loaded. This feature will directly load the selected program and it allows selecting programs which are not close to the current program

In Direct mode, pressing the **Save** button will save the program at its location in the Pro-800 bank but also send it to the synth at the same location.

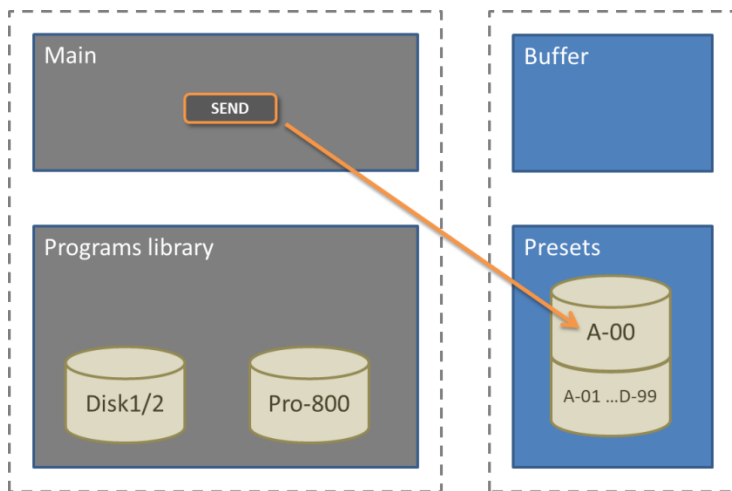
Pressing **Save As** will allow saving to another place as usual.

Receive and Send

Depending on the **Direct mode** selection and the position of the Program selector, clicking the **Load Rcvr** button requests the preset selected with Bank and Program rotaries (and indicated in the small LCD) and loads it in the editor.



Clicking the **Send** button sends the current program parameters to the Pro-800 A00 preset which is used as “edit buffer”.



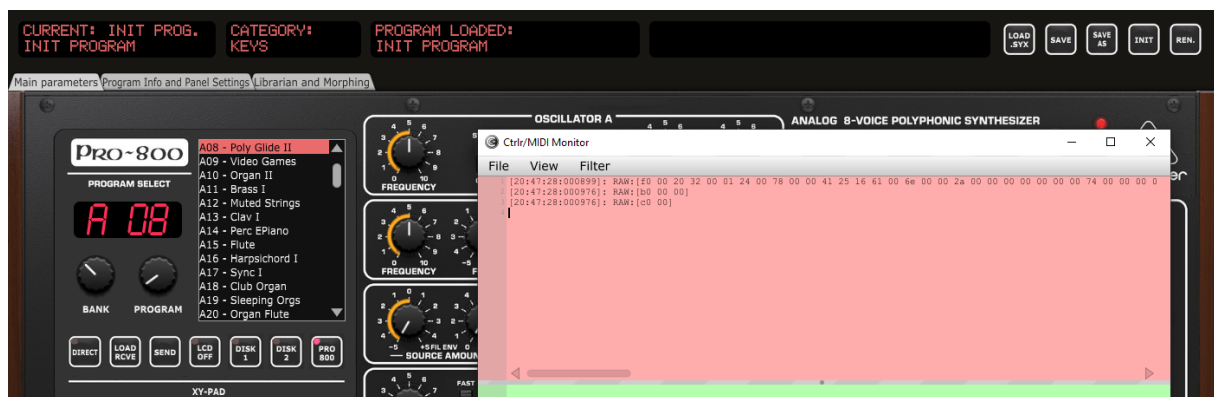
Program Init and Rename

Program Init



You can define your own Init Program (see below)!

Clicking the **Init** button loads an Init program in the panel and sends it to the synth's A00 preset:



The Init program used is the file **Pro-800 Init Program.syx** file stored in the temporary folder of the panel. This folder is created automatically at panel installation.

On Windows, the temporary folder is at: `C:\Users\your_user_name\AppData\Roaming\Behringer Pro-800\8..VpGuxieVMH`

On MacOS, the temporary folder is located in your personal *Library/Preferences* folder. This is a hidden folder that you can see/reach by using the Finder and clicking on Go while pressing the Option (Alt) key.

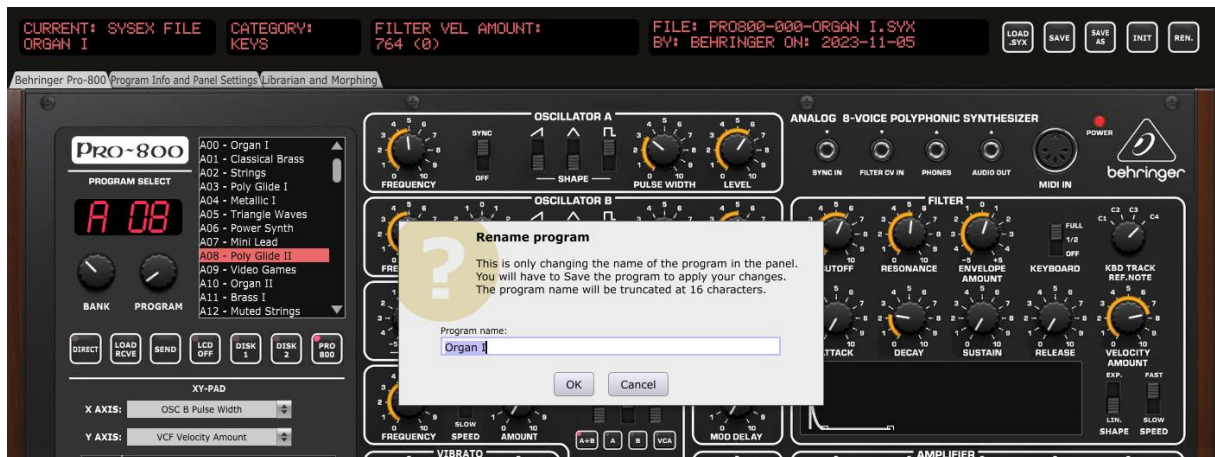
If needed, you can replace the **Pro-800 Init Program.syx** file by your own.

If the **Pro-800 Init Program.syx** file is not present or corrupted or not of the right format or does not have the expected name, an error will be displayed and the Init function will not work until this is corrected.



Program Rename

Clicking the **Rename** button opens a popup window where you can modify the name of the program. The name should be 16 characters long at max (will be truncated if longer).



The new name will be kept only after a Save, Save As or Send operation.

Main parameters tab

In the [Main parameters](#) tab, you have access to a quick access to the content of the different banks for quick loading of programs, to an XY-Pad and of course to the same parameters as on the actual synthesizer with the possibility to visualize the ADSR envelopes and to adjust them by moving the anchors of the graphs.

Program select area

Way of working

The presets displayed in the list are the one of the source bank (Disk 1, Disk 2 or Pro-800). If the selected source bank is empty (not loaded) then the list is empty.

You can either use the **Bank** and **Program** rotaries to select a program or left-click on a program to select it. To load it you will then press on the Load button.

Double clicking on a program will directly load it in the editor.

The **Bank** selector allows choosing the bank of 100 programs as on the synth (Bank A-D)

The **Program** selector allows browsing the programs from the synth (Direct mode ON) or from the bank selected with one of the Disk 1, Disk 2 or Pro-800 switches ([Direct mode](#) OFF). The program selector is going from 0 to 100 but with position 100 being special while positions 0-99 are selecting a program on the synth or in the banks. By placing the program selector completely to the right on the 100 position, you will be able to perform an operation with a .syx dump file instead of the selected bank. The program LCD on the top left of the panel is showing the current loaded program while the center parameter LCD and the small LCD are showing the selected program.

Buttons

The different buttons have the following functions:

- The **Direct** button selects the [Direct mode](#).

In that mode, the [Bank](#) and [Program](#) buttons are selecting a program on the actual synth. The Direct mode is disabled if there is no connection to the synth

- The **Load Rcvr** button allows loading a Pro-800 sysex dump file from disk or a Pro-800 program from a bank or allows receiving the selected program from the corresponding Pro-800 preset slot

- The **LCD OFF** button allows to keep the “LCD screen” black and thus not updated when parameter values are changing. This

is useful for example when you are using the panel in a DAW with the automation of different parameters at once or when using the XY pad. Unless keeping the screen black, the LCD content will jump from one parameter to the other and will keep blinking

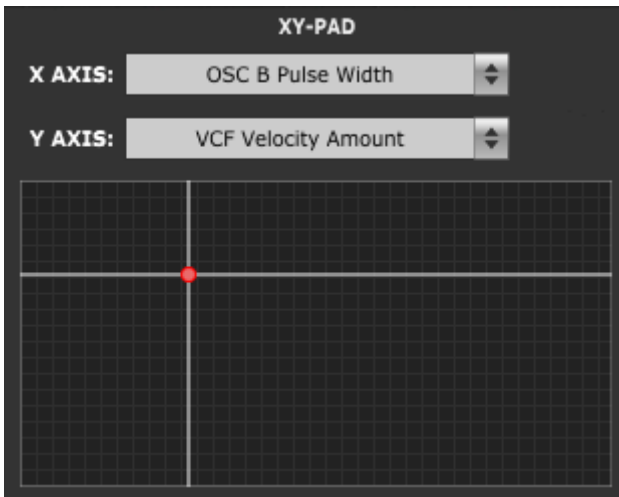
- The **Disk1**, **Disk2** and **Pro-800** buttons are selecting the source bank whose content is displayed in the list. The list will be empty if the selected source bank is not loaded in the Librarian.



XY pad area

The XY Pad area allows selecting 2 parameters (handled with rotary buttons) and changing them by using the mouse to modify the red dot cursor on the pad.

The parameters are selected from the pull-downs.



Pro-800 synth parameters area

This area presents the synth parameters in a very similar way as on the actual synth but provides also a direct access to the parameters hidden in the synth's menus.



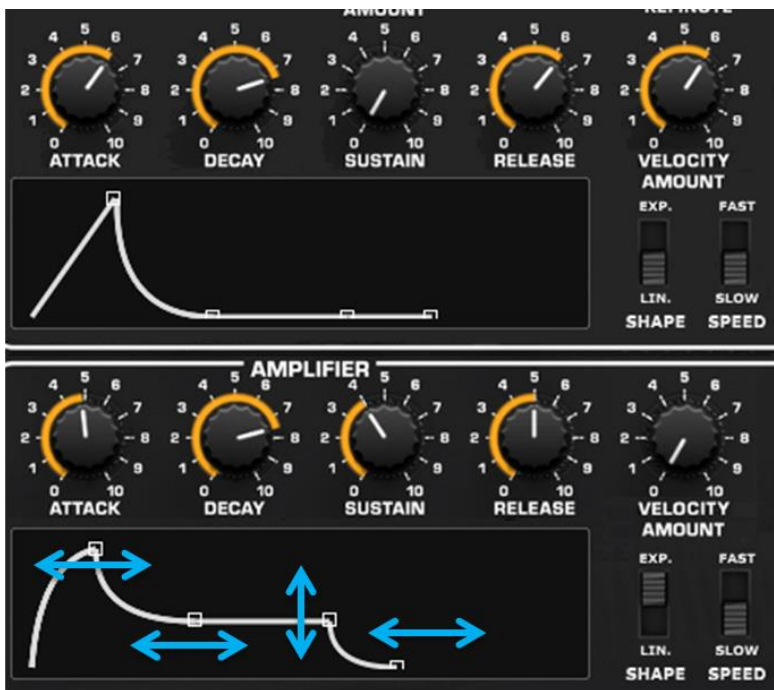
The parameter LCD is showing current parameter name but also its last loaded/saved and current values. Clicking on a rotary button displays that info without any parameter change.

The LFO Mode destinations buttons are acting as toggle buttons (only one of them can be active at a certain time).

When the Unison mode is set on Chord, it is possible to adjust the different note intervals in the [Program Info and Panel Settings](#) tab (see after)

Envelope shapes

You can modify the envelope shapes by either moving the ADSR rotary buttons or by using the mouse and moving the anchors on the graphs either vertically or horizontally.



When moving the anchors, the corresponding ADSR buttons will also move and the parameter LCD screen will display the parameter name, saved and current values.

The shape of the envelopes can also be adjusted by changing the Shape switch.

Program Info and Panel Settings tab

In the [Program Info and Panel Settings](#) tab, you can:

- Manage some Additional parameters
- Panel and Global settings
- The current program description, author and category
- The Unison chord notes interval when the Unison switch is set to *Chord*
- See the “About” screen of the panel (last version number and changes done)
- Display and export the values of the current program parameters



Additional parameters

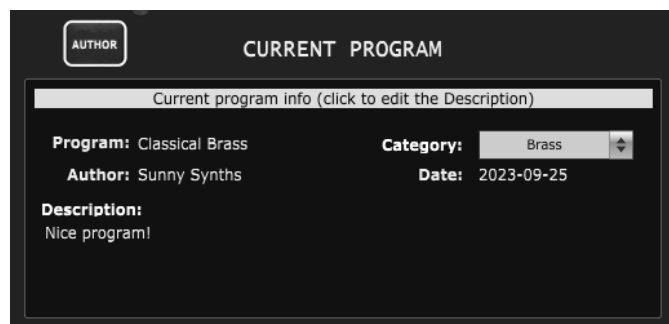
The remaining program parameters not displayed in the first tab are available in this section.

Arp Mode is only sent to the synth, not received (because not sent by the synth).

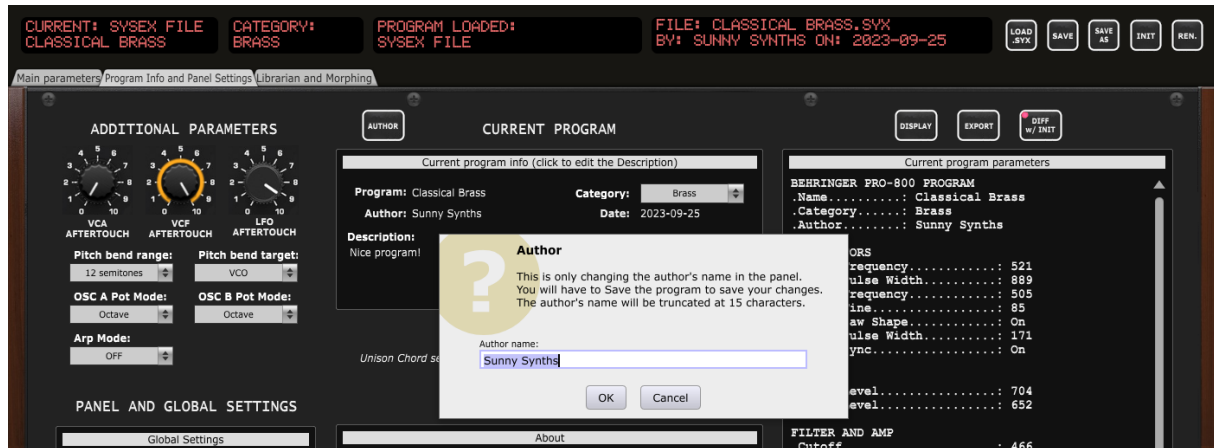
Current program's additional info

It is also possible to add/modify a description of the program, its author and assign the program category.

The **Description** is edited by clicking in the description text, typing a new text then pressing the Enter key before clicking somewhere else.



Clicking the **Author** button opens a popup window where you can modify the name of the author of the patch. The name should be 15 characters long at max (will be truncated if longer). If you leave the Author name empty then a “?” is displayed.



The **Date** is set automatically when saving the program.

The **Category** is one of the following: [Not defined], Arpeggio, Bass, Brass, Drone, Keys, Lead, "Noise", Organ, Other, Pad, Percussion, Sound FX, Sequence, Strings, Vox, Woodwind



The description author, category and date are saved in a separate `_AddInfo.esx` file with the same name as the main file. If the program is coming from a disk bank then they are saved in the `_AddInfo.esx` file of the bank (see hereafter)

Panel and Global settings

Global settings

The idea is to, later on, provide access to some of the Global settings of the synth but at this stage, I don't know the positions and values in the Global settings sysex message.

For the moment, you can try the **Vintage Mode** ;-)

Panel zoom

The panel can be zoomed by using the Ctrl + or Ctrl – keys combinations. This is also available from the **View** menu.

Using that method is incrementing/decrementing the zoom factor by 10% steps but the main issue (for some users) is that the zoom factor is not memorized and thus at next usage the zoom is back at 100%.

This is the reason of the implementation of this “manual” zoom. Modifying the zoom factor using those buttons is changing the zoom by 5% steps and will make it keep the zoom factor for next usage.

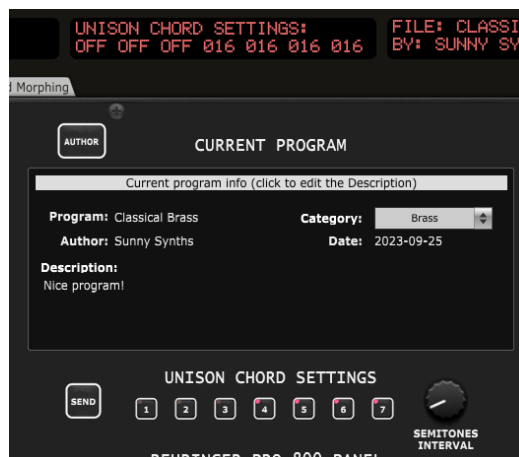
If you are still modifying the zoom using the View menu or the Ctrl + / Ctrl – keys, no worries! The “manual” zoom is reading the current zoom factor on the panel each time one of the main top panel button is used (Load, Save, Init, Rename).

Unison chord settings

When the Unison switch in the Poly-Mod section is set to *Chord* in [Main parameters](#) tab, you will be able to adapt the notes intervals.

Press the buttons **1-7** to select the intervals(s) to adjust then turn the **Semitones interval** rotary. Repeat at will.

Use the Send button to send the current program to the A00 preset used as Edit buffer in order to listen to your changes.



Other panel settings

Different switches are giving you the possibility to slightly adapt the behavior of the panel:

- **Bank Autosave**: when performing changes in the Disk1, Disk2 or Pro-800 banks, you can either have the change made directly and automatically in the .syx file of the bank or not. If not, then you must (and should not forget to) save the bank to your computer disk.
- **Actions confirm**: when performing load and save operations in the main panel or bank/program operations in the librarian, this switch allows you to have confirmation popups or none. It is advised to start with this switch on the **On** position
- **Actions OK confirm**: in the same way as the previous switch, this switch gives you the possibility to have or not confirmations popup of your actions. It is also advised to start with this switch on the **On** position

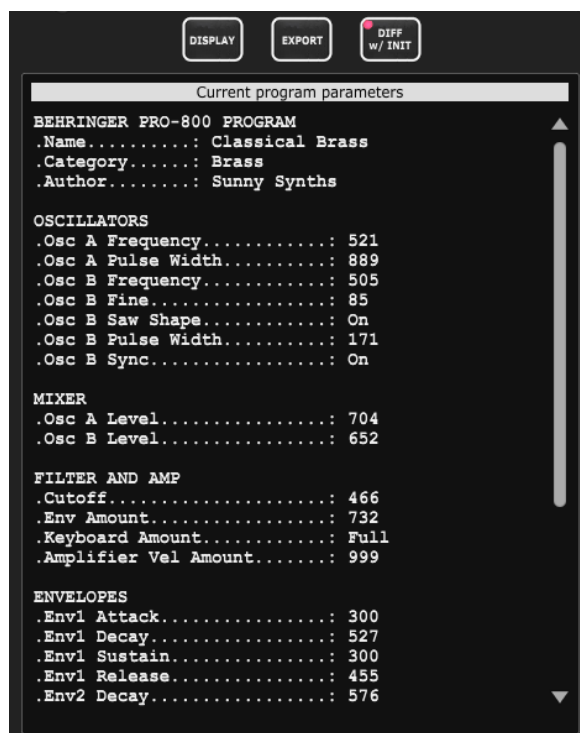
Display and Export info

On the right side of the [Program Info and Panel settings](#) tab, you have access to the list of the current program parameters.

The **Display** refreshes the list.

The **Export** button refreshes the list then directly presents a popup window allowing saving the listed information to a text file on the computer.

The **Diff w/ Init** button allows to only see the differences with the Init program.



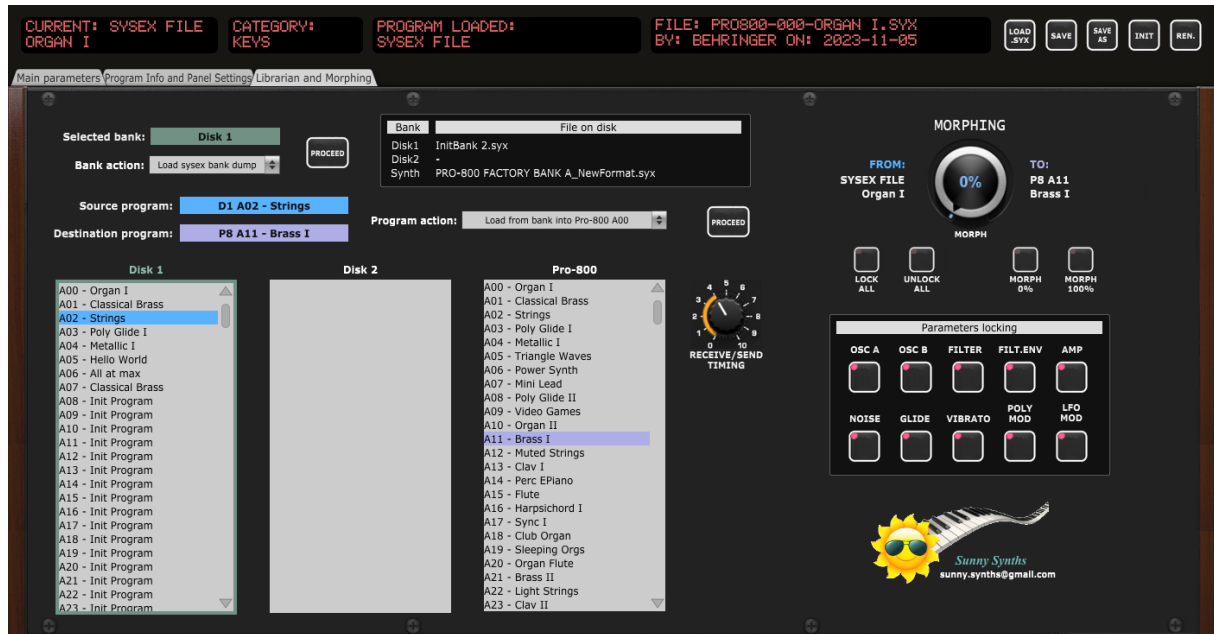
In the coming version of the editor, a pulldown will be used to provide different kinds of lists (actual vs saved values, only saved values, source vs destination programs from the library).

The librarian

Librarian and Morphing tab

In the **Librarian and Morphing** tab, you have access to the librarian that allows you to:

- Perform different bank operations on up to 3 banks of 400 programs (load, receive, send, init)
- Perform different program operations on up to 3 banks of 400 programs (load, save, move, copy, swap, init)
- Perform a morphing between the current program and a program chosen as destination



Use the factory preset bank from the provided Zip file as starting point in the librarian and please take the time to well read and understand the next paragraph!

Bank files concept

The exported full dump containing 400 programs doesn't contain extra information as program description, author, category, save date. Full dumps can also be of different sizes due to empty programs or previous firmware file size.

Therefore, when selecting a full dump to load, the original *your_fulldump.syx* file is transformed into a *your_fulldump_NewFormat.syx* file and a *your_fulldump_NewFormat_AddInfo.esx* file. The first file will contain only the 400 programs (old format converted to FW 1.3.7 fixed length format and empty programs replaced by the Init program) while the second one will contain the extra information for the 400 programs.

When loading a bank from disk later on, you should either pick the original *your_fulldump.syx* file (it will then be re-converted) or directly the converted version *your_fulldump_NewFormat.syx*.

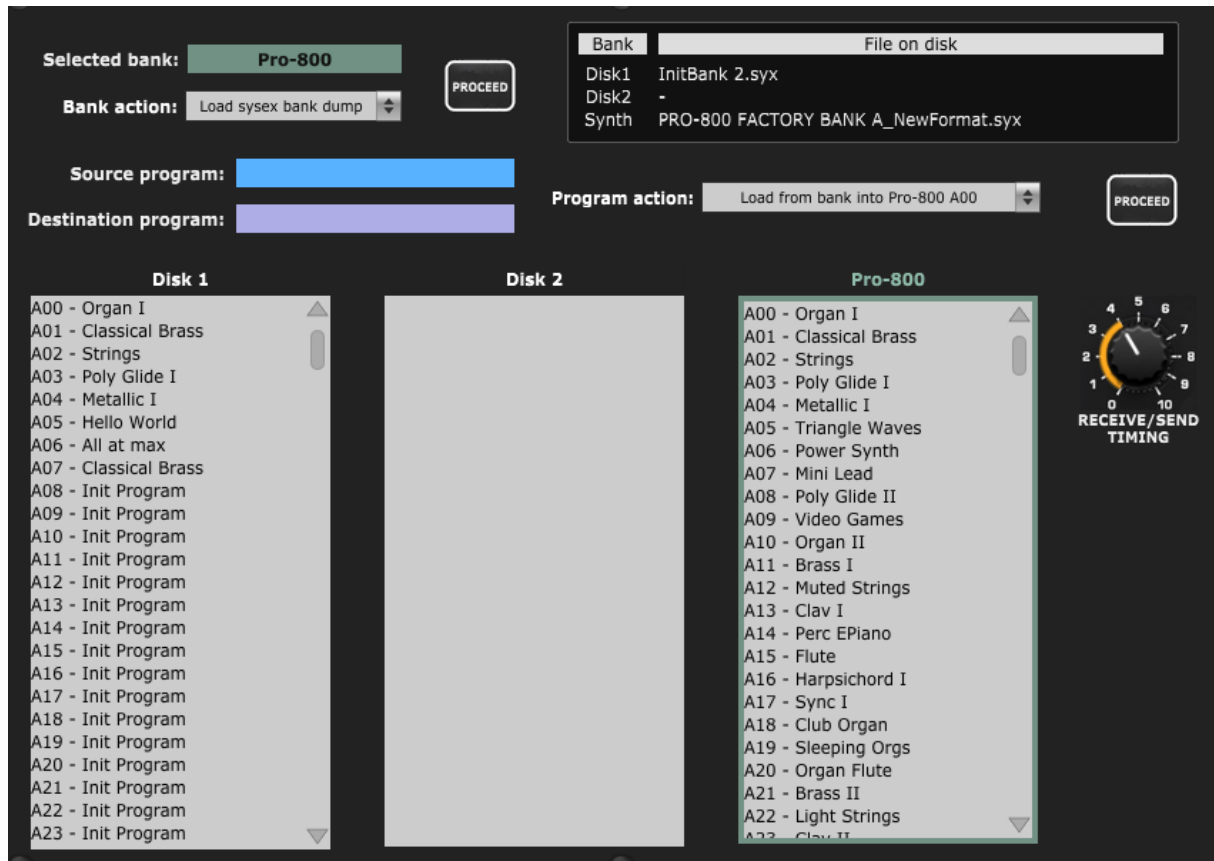
Bank management actions

You have **2 Disk banks** and **1 Pro-800 bank** available. Each bank consists in 400 programs corresponding to a complete content of the Pro-800 synth (100 programs in A, B, C and D banks)

Disk banks only exist in the computer world (memory and file); changing them is not affecting the synthesizer and they can be used to assemble programs in some kind of offline mode.

The Pro-800 bank is supposed to reflect the content of your synth. It is also loaded in memory and has a counterpart as file but some of its modifications are reflected on the synthesizer.

The main underlying file behind a loaded bank is indicated in the secondary screen (filename only).



The Disk 1, Disk 2 and Pro-800 have short names when shown in the LCD displays: D1, D2 and P8.

When a Bank is loaded, its programs are available for selection by the main panel Program selector.

The following Bank operations are available:

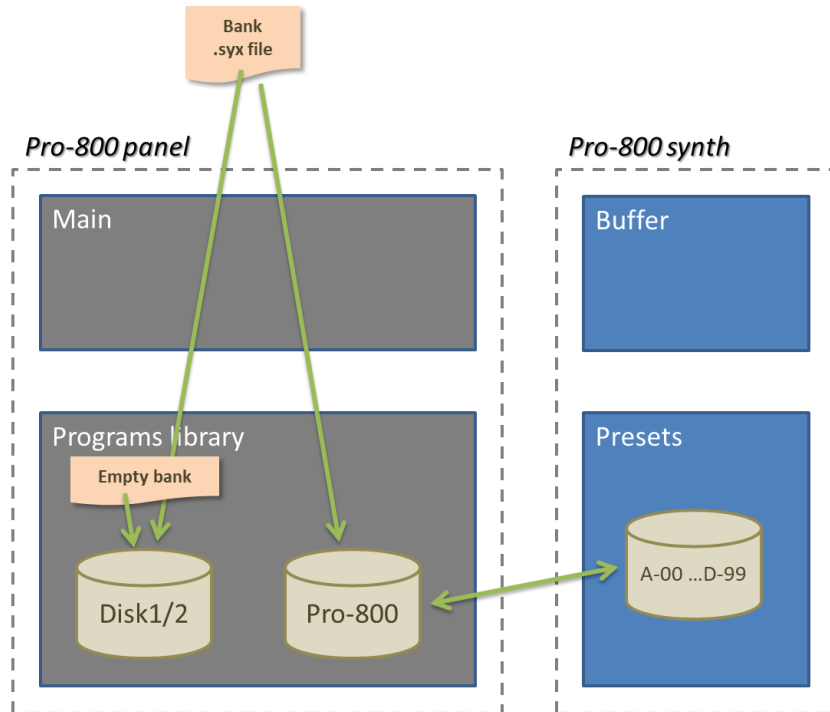
- Load a full 400 programs bank from a .syx file in Dx, P8 banks
- Load any number of programs(or just A-D banks) as full 400 programs bank in Dx, P8 banks
- Save the A-D banks separately or the complete 400 programs bank
- Load an empty bank (400 Init programs) in Dx, P8 banks
- If P8 then the bank is sent to the Pro-800 (be cautious: it is replacing all programs on the synth)
- Receive the full content of your Pro-800 (400 programs) into the Pro-800 bank
- Send a bank (400 programs) to the Pro-800 (be cautious: it is replacing all programs on the synth)
- Clean / Reset a bank in the panel
- Export the list of programs to a text file

Look at the pictures below for a graphical description of those possibilities.

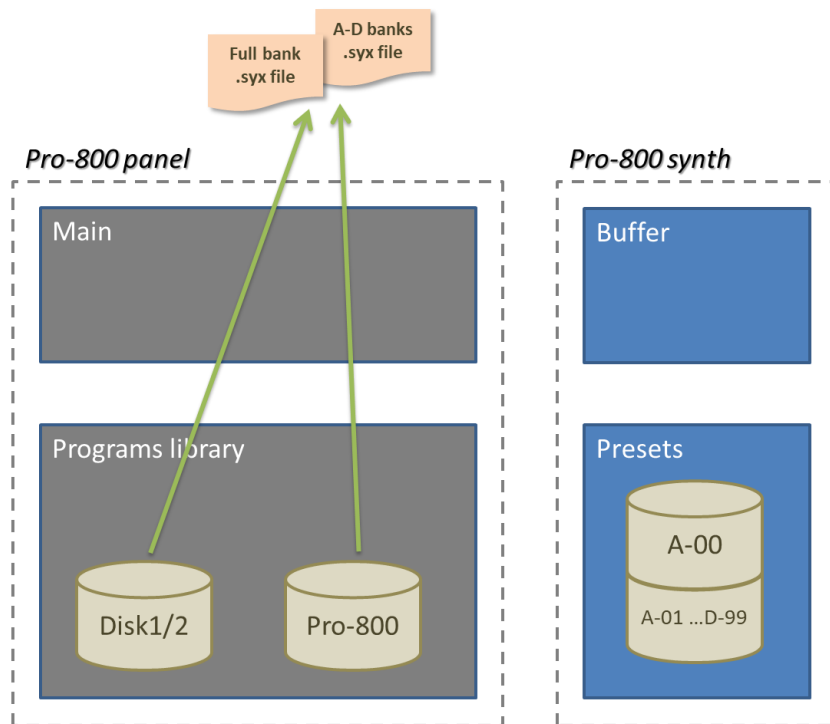
Usage:

1. Select a bank by **left-clicking on one of the three bank labels**
2. Select an action from the **Bank action** drop-down menu
3. Click on the **Proceed** button.

Load bank actions:



Save bank actions:



Receiving/Sending a bank of 400 program from/to the Pro-800 synth

When performing a Bank Receive/Send, the progress indicated in % in the parameter LCD. A full load takes 1-2 minutes to complete depending on the transfer speed.



You can adjust the timing between the request of programs with the **Transfer Speed** rotary in the [Program Info and Panel settings](#) tab. A reasonable value is 80ms. If you have issues, make it slower. If you are successful, you can try to make it faster.

When done, a message is shown and the Pro-800 bank is listing the content of your Pro-800. Any further modification of the content of the Pro-800 bank is automatically reflected on the synth (optional on the bank file on the disk). For example, when copying a program from the Disk 1 bank to the Pro-800 bank will replace the content of that destination program in your synth.

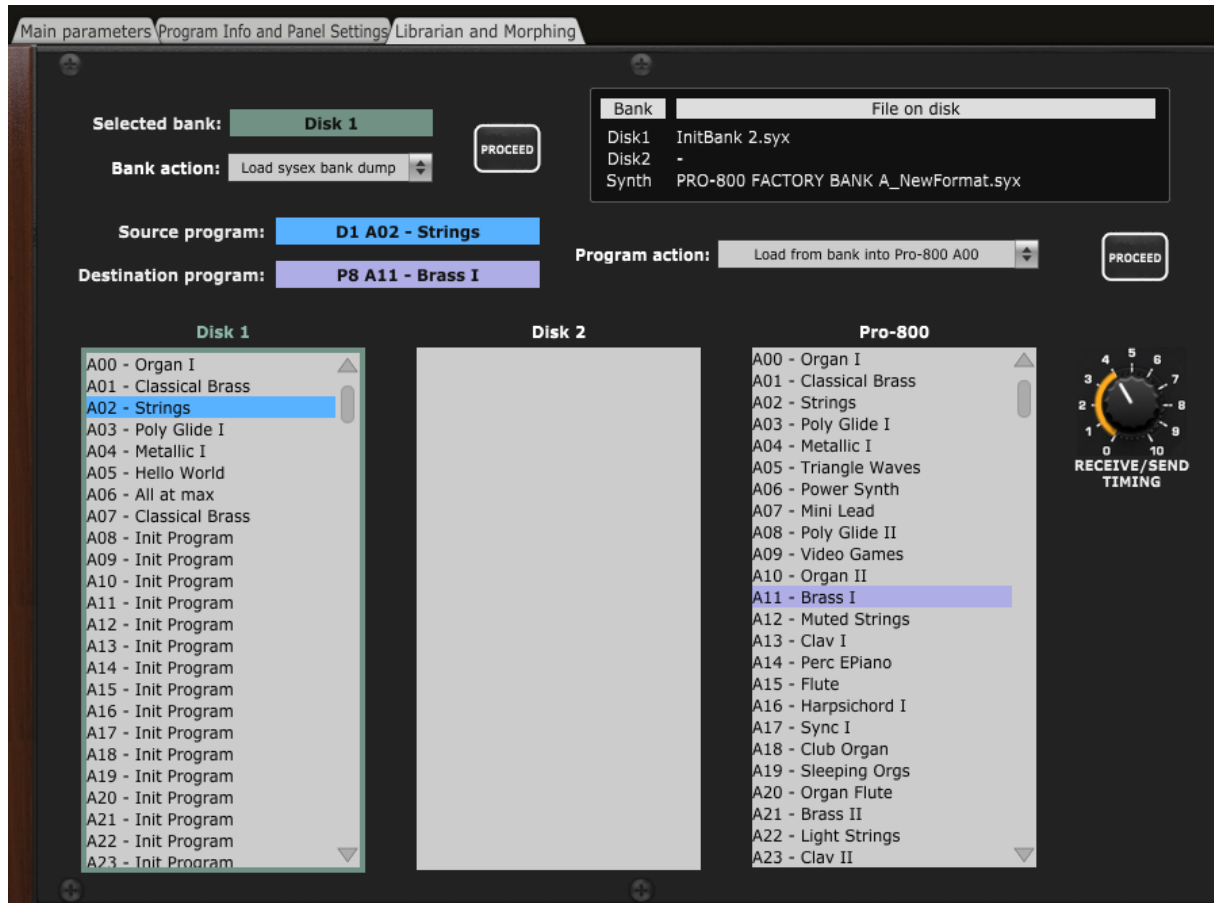


Don't forget to save the received bank to your disk!

Program management actions

Programs can be selected as soon as some banks are loaded.

A **Source program** is selected by **left**-clicking on a program name; a **Destination program** by **right**-clicking on a program name.



The following program operations are available:

- Load a Source program from a Disk1/2 bank to the editor and in the preset A00 of the synth
- Load a Source program from the Pro-800 bank to the editor and in the corresponding preset
- Load a single program dump .syx file in Disk1/2, Pro-800 bank destination
- Load an Init program to a Disk1/2, Pro-800 bank destination.
- Save the Source program to a .syx program dump file
- Move a program from Source to Destination (the Source program is replaced by an Init program)
- Copy a single program from Source to Destination
- Copy several programs from Source to Destination in an as-is way
- Copy several programs from Source to Destination in a collated way
- Swap Source and Destination programs

Please note that:

- When saved in a bank, the corresponding bank file is also updated on the computer (when **BankAutoSave** is On, otherwise it has to be saved manually)
- It is optional to load a program in the editor and in the Pro-800 after the Load in a bank
- When saved in the Disk1/2 banks, the program can be send to A00 preset used as buffer
- When saved in the Pro-800 bank, the program can be send to the corresponding synth preset



A bank that needs to be saved is indicated by an "*" as Disk 1 * in the picture above. This will happen when the **BankAutoSave** switch is set to Off in the [Program info and Panel settings](#) tab.

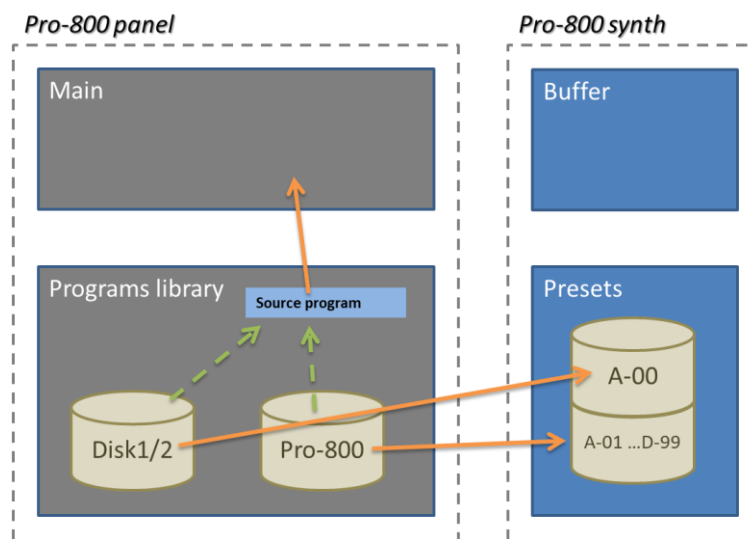
Look at the pictures below for a graphical description of those possibilities.



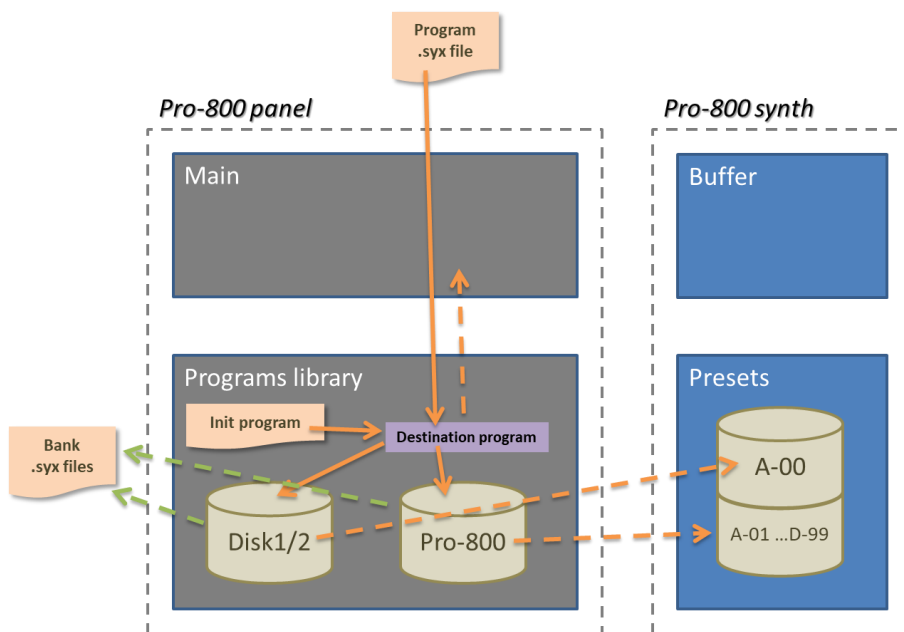
Usage:

1. Select a **source** program by **left-clicking** on a program name in a bank
2. Select a **destination** program by **right-clicking** on a program name in a different bank
3. Select an action from the **Program action** drop-down menu
4. Click on the **Proceed** button.

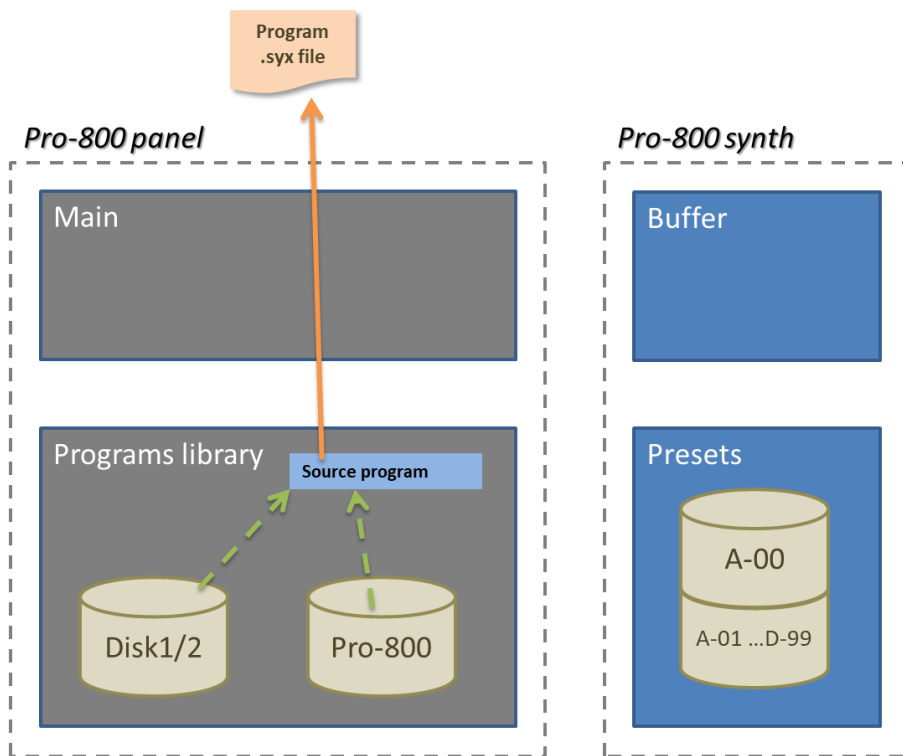
Load program actions: loading a Source program from a bank



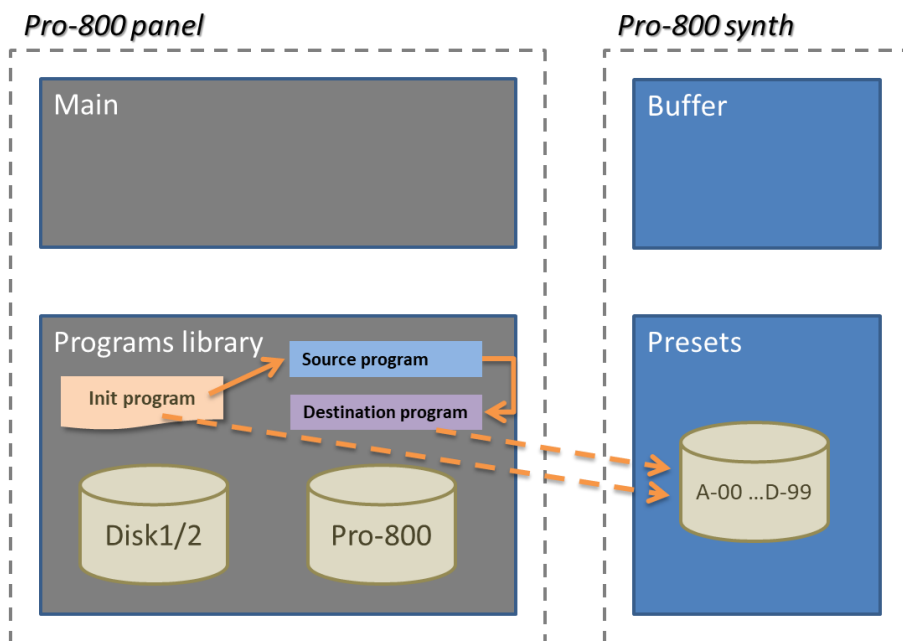
Loading a single program .syx file in Dx or Pro-800 destination; loading an Init program in Dx, Pro-800 destination:



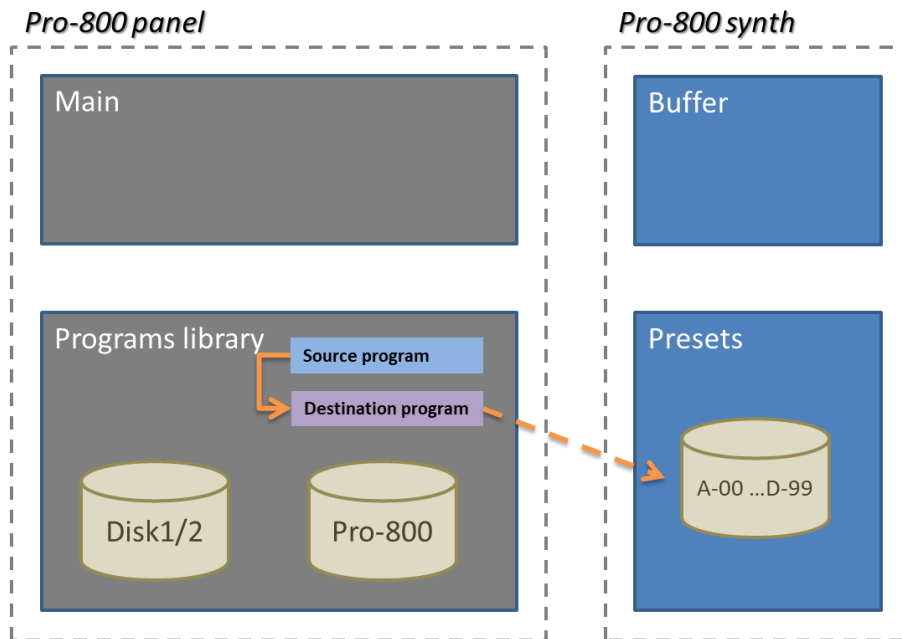
Save program actions: save the Source program to a .syx program dump file



Move program: when moving the Source program to the Destination, the Source program is replaced by an Init program. If either the Source or the Destination programs are in the Pro-800 bank then they are replaced in the synth



Copy program: copy a program from the Source to the Destination. If the Destination program is in the Pro-800 bank then it is replaced in the synth



Copy several programs:

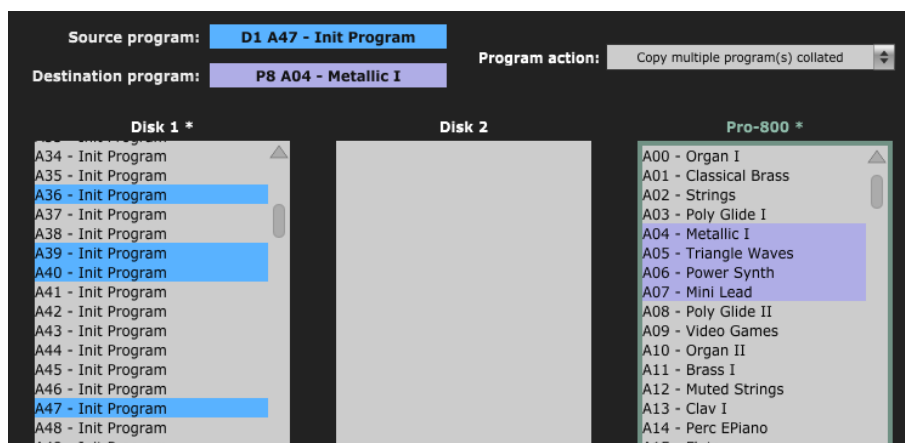
It is possible to copy several programs at once:

- First select the Program operation (Copy multiple programs collated or Copy multiple programs as-is)
- Use Shift or Ctrl to select several programs as you would do in Windows Explorer / Finder
- Select the destination program. The librarian will indicate the programs that will be overwritten
- Press the **Proceed** button to perform the copy

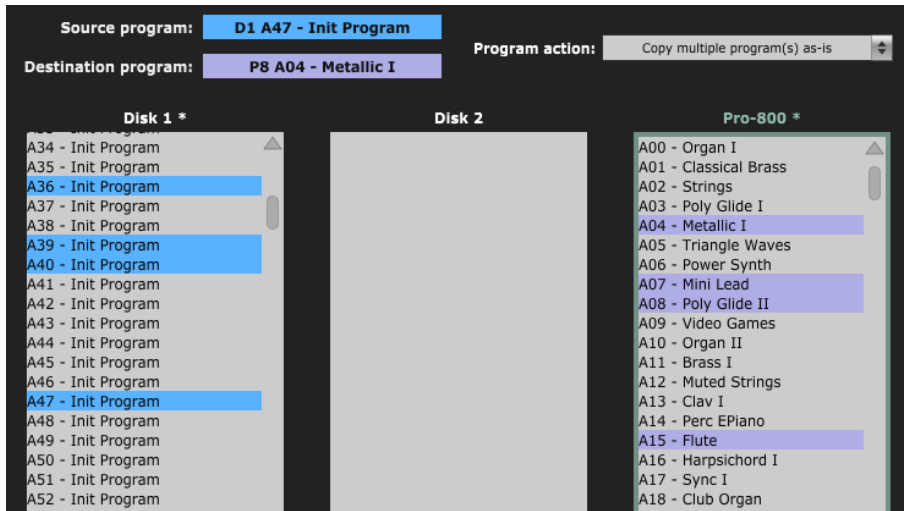


The librarian takes into account if you copy to a place where there are fewer destinations than the number of programs to copy. For example when copying A00-A05 to D98, only 2 programs will be copied.

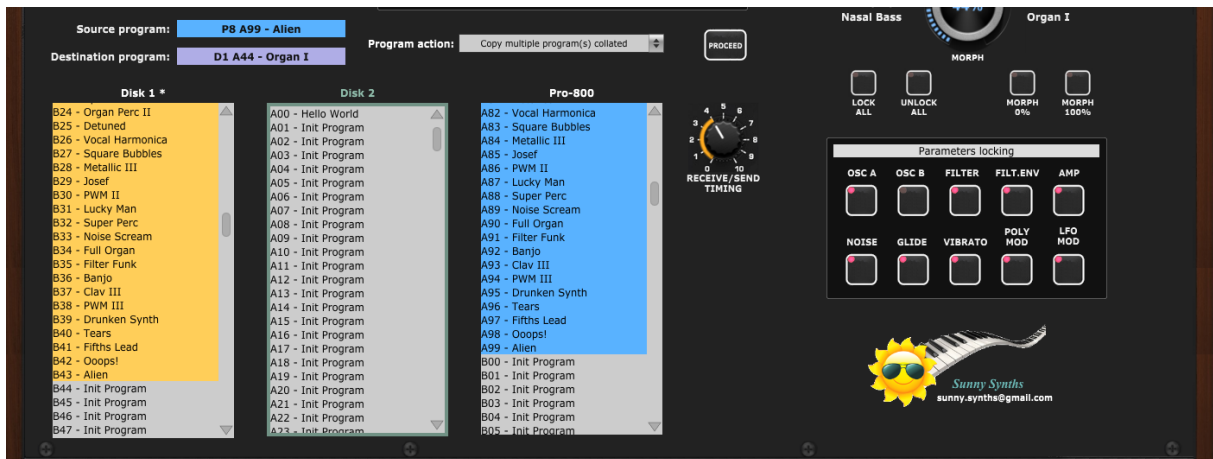
Collated copies:



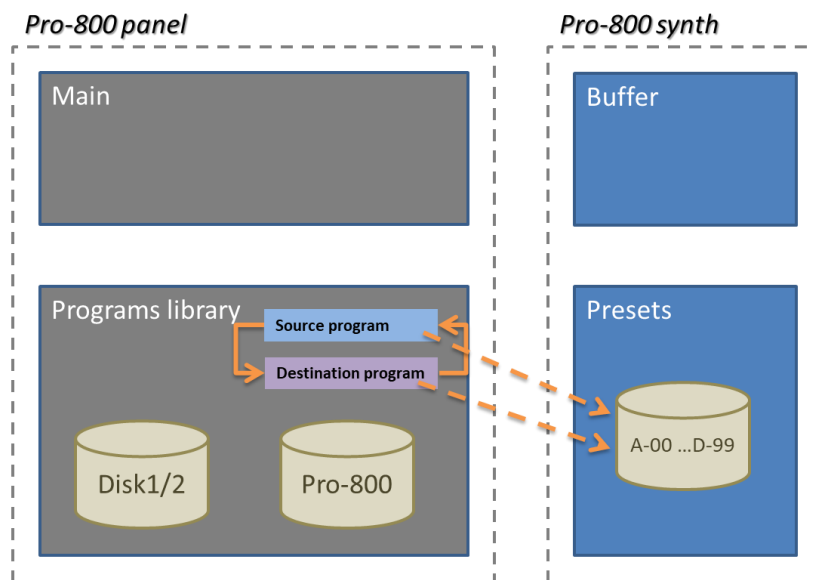
As-Is copies:



Copied programs are indicated in yellow:



Swap program: Source and Destination programs are swapped. If either the Source or the Destination programs are in the Pro-800 bank then they are replaced in the synth

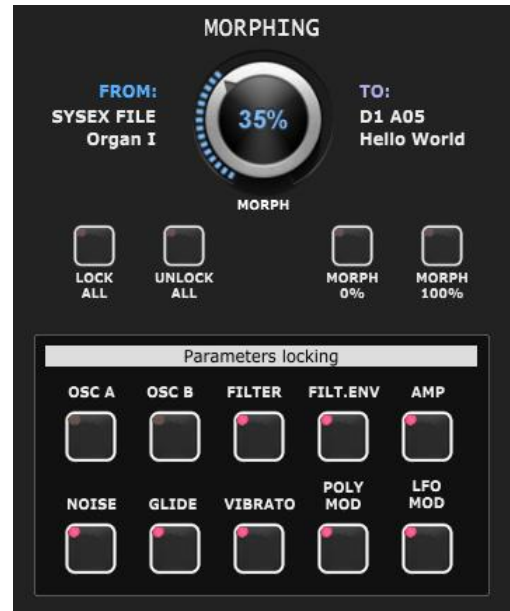


Program morphing

The right section of the [Librarian and Morphing](#) tab allows performing a morphing between the current program (FROM) and any program chosen as destination.

Press the LCD OFF button first (to avoid the LCD screen changing for each parameter change) then turn the morphing button to have the sound evolving from the *From* program to the *To* program.

The morphing will only be performed on the parameters sections that are unlocked.



About the morphing:



- Continuous values are gradually changed from the *From* value to the *To* value (e.g. Amp EG Attack, VCO1 Level, VCF Cutoff...)
- Discrete values are abruptly changing from the *From* value to the *To* value when passing the 50% morphing level as it is not possible to calculate/set intermediate values. This is valid for all switches and lists

You can use the buttons in the Parameters locking section to lock/unlock sections of parameters. All the parameters in a locked section will not be affected by the morphing.

The sections are the ones corresponding to the sections in the [Main parameters](#) tab.

The buttons are performing the following actions:

- **Lock All:** lock all parameter sections to quickly unlock a few of them
- **Unlock All:** unlock all parameter sections to quickly lock a few of them
- **Morph 0%:** direct jump to the initial situation without morphing. Doesn't take into account the parameters locking
- **Morph 100%:** direct jump to the 100% morphing situation. Doesn't take into account the parameters locking



It is advised to not turn the morphing button too fast especially when all sections are unlocked as each % of morphing is sending all parameters to the synth.

Installing and using the Pro-800 panel as plugin

First of all, thanks to all people that have made some tests and provided feedback from using the plugin with their DAW.

It is generally better to use the panel in standalone mode and not in VST. VST usage is of course interesting when you want to do some parameter automations or to save the patch setup for the corresponding track (this is saved together with the project). As all DAWs have a different way to handle VST's and this is also depending on your Midi interface setup, it is difficult to describe the setups and identify solutions for all the possible problems.

The following paragraphs will provide info on how to install the plugin version of the panel but also describe the way to use it and the known limitations for each DAW.



Don't hesitate to send a mail to sunny.synths@gmail.com if you see errors or identify ways of doing things in your DAWs. They will be mentioned in the next version of the manual.

Installation

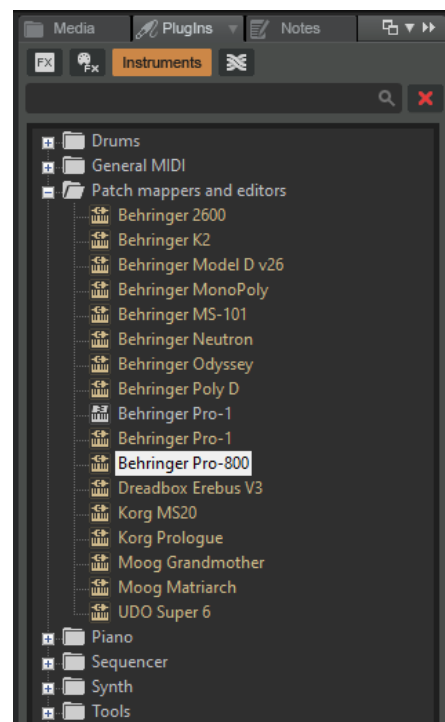
On Windows PC, depending on your DAW version and after unzipping the main file, either copy the **Behringer Pro-800.dll** file from the Windows VST 64 bits directory to your 64 bits plugins directory (Steinberg hosts often use C:\Program Files\Steinberg\VSTplugins as the default plugin path).

On Mac OS, unzip then copy the **Behringer Pro-800.vst** file from the MacOS VST directory to your VST plugin directory (/Library/Audio/Plug-ins/VST) and copy **Behringer Pro-800.component** file from the MacOS AU directory to your plugin directory (/Library/Audio/Plug-ins/Component). You will most probably need administrator rights to perform those copies.

On MacOS you may also get the message that the *"Component or VST cannot be opened because the developer cannot be verified"*. Go to [System Preferences](#) then [Security and Privacy](#) and click on the [Open anyway](#) button to have the plugin saved as an exception in the security settings.

Start your DAW and check that the plugin directory is rescanned and that the **Behringer Pro-800** panel is visible in your list of plugins.

Here is an example in Cakewalk (a light blue scanning popup is displayed as soon as a file is added or modified in the identified 64 bits VST plugins folder):



Midi setup when using the panel as plugin

There are 2 ways to setup a panel in your DAW:

- In a similar way as for the standalone version by allocating fixed Midi channels to the input and output
- Passing by your DAW that is setting the Midi channels



As mentioned earlier, the setup of the plugin will be different according to your DAW and your hardware setup and thus this is only giving you a place to search and experiment rather than precise indications. Sorry for that.

In most DAW, you must also arm your track and enable monitoring.

Option 1: setup as in standalone mode

- In the **Midi** menu, select **Input – Device Pro-800**
- In the **Midi** menu, select **Input – Channel 0** (this is set to channel 0 = All channel because it is needed to receive from both the main timbre and the sub timbre)
- In the **Midi** menu, check that **Controller – Device** is set to *None*
- In the **Midi** menu, select **Output – Device Pro-800**
- In the **Midi** menu, select **Output – Channel 1** (set this to the Midi Global channel of your Pro-800).
- In the **Midi Thru** menu, at least set **Plugin host -> Output device**. This is allowing the DAW to reach the output device (the Pro-800 in that case) for playing notes

Depending on the DAW and as both the DAW and the panel plugin can use the same Midi port you will most probably be obliged to disable the corresponding Midi In and Out channels in your DAW.

This setup is thus in some way rigid because channels are dedicated BUT may be mandatory if your DAW do not let the sysex pass as in Ableton.

Option 2: “hybrid” way with Input able to do multi-port; Output managed by the DAW

- In the **Midi** menu, select **Input – Device Pro-800**
- In the **Midi** menu, select **Input – Channel 0** (this is set to channel 0 = All channel because it is needed to receive from both the main timbre and the sub timbre)
- In the **Midi** menu, under **Plugin Options**, select **Output to plugin host**
- In the **Midi Thru** menu, at least set **Plugin host -> Plugin host**

This option may not work for all DAWs.

Tests and identified limitations

Different DAWs have been tested and some way of working presented here.

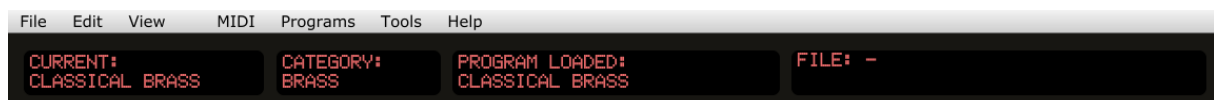
The following actions are checked:

- Creating a track using the plugin
- Displaying the instrument and checking all controls are working fine including Load/Save...
- Saving and opening a project in the DAW. This is checking that the editor is restored as it was saved (zoom factor, loaded banks if not moved, buttons positions...)
- Creating a second track with the plugin
- Saving and opening a project with several tracks in the DAW. This is checking that there can be different tracks using the plugin with each of their last patch saved restored correctly.
- Creating a preset in the DAW. Each DAW has different ways to do this. Creating presets can also be done by saving full channel strips that are including the VST instrument setup
- Creating a track by selecting a DAW preset instead of selecting the plugin. Checks if the correct patch is restored. When working, this is done by loading a saved channel strip.
- Replacing a DAW preset by another DAW preset



Replacing the DAW preset in a track by another DAW preset is working fine. The only remark is that you may get some popups if you directly switch between freshly created presets (just click Cancel in those popups). Creating a new track with the plugin and switching between existing DAW presets works fine and doesn't display the popups.

When replacing a DAW preset by another one, the editor LCDs will show the name used in the editor (not the name of the DAW preset) like this (thus not the bank and program number):

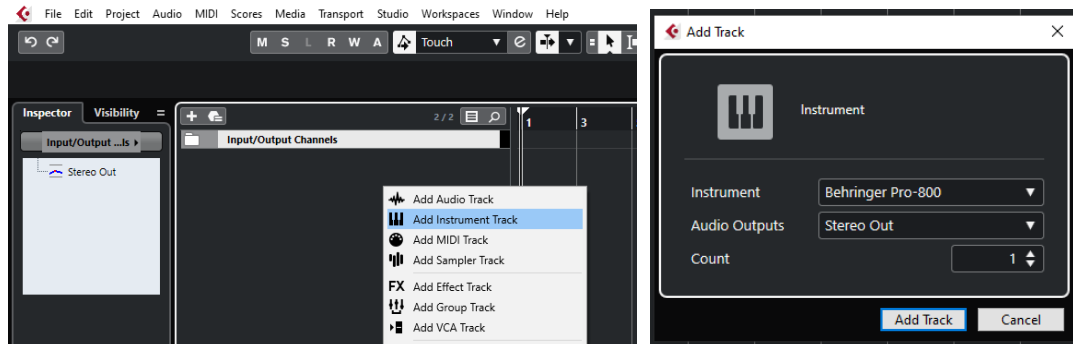


	Cubase	Cakewalk	Reaper	Ableton	Studio 1	Logic
Create track	✓	✓	✓	✓	✓	✓
Using the plugin	✓	✓	✓	✓	✓	✓
Save and restore project in DAW	✓	✓	✓	✓	✓	✓
Save and restore project with 2 tracks	✓	✓	✓	✗	✓	✓
Create DAW preset	✓	✓	✓	✓	✓	✓
Create track based on DAW preset (saved channel strip)	✓	✓	✓	✗	✓	✓
Replace DAW preset by another DAW preset	✓	✓	✓	✓	✓	✓

Cubase

Creating a new track

Add an Instrument track by using the Add track menu displayed when right clicking in the middle of the workspace then select the Behringer Pro-800 VST. Click on the [Instrument button](#) to display the panel and use it as you would do for the standalone version.



...or by dragging and dropping from the VSTi panel (easier).



When saving the Cubase project, the panel is saved as well. It will be restored in the same state (zoom factor, loaded banks if not moved, buttons positions...).

Using several Pro-800 tracks at once

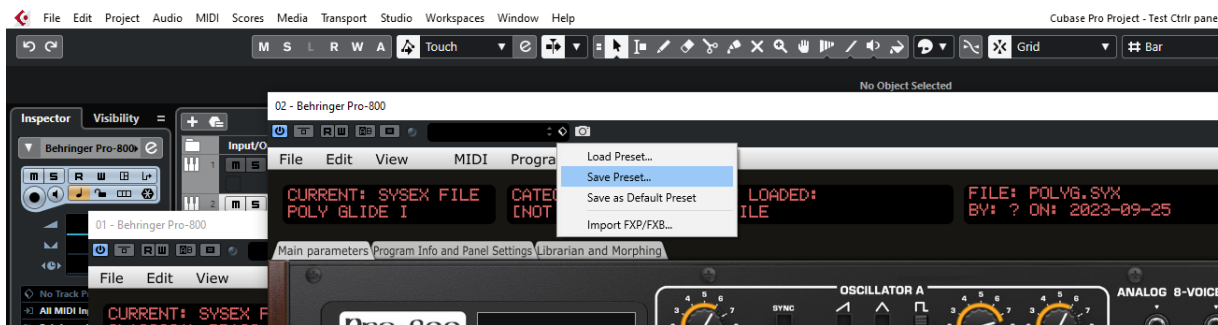
You can associate the panel to several tracks in order to keep track of the different patches used for them



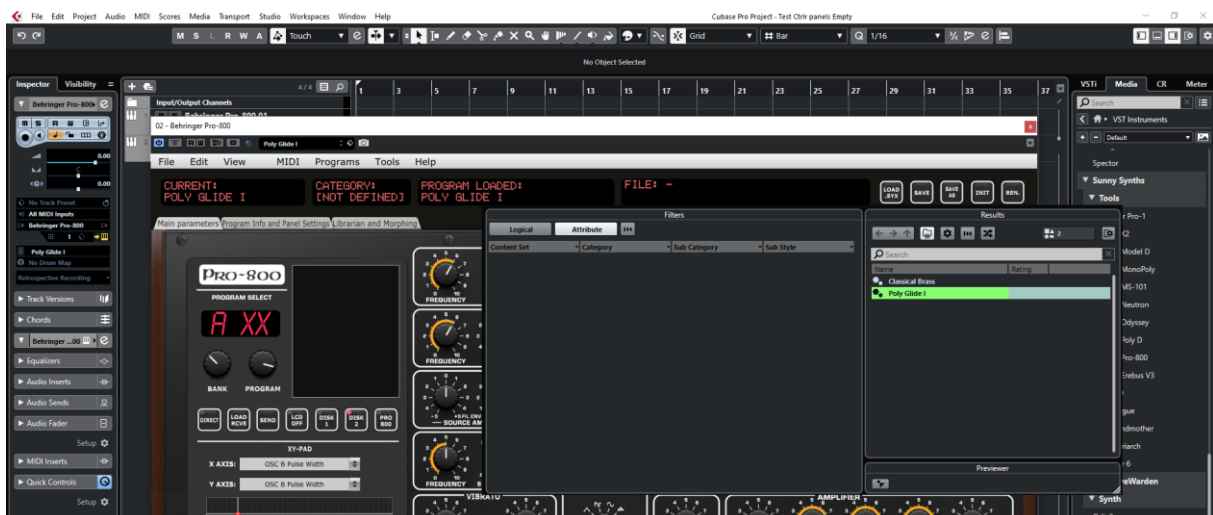
Saving a patch as a Cubase preset

You should save your patches using the Save button **inside** the panel but in addition to that you can also save them as *Cubase preset* or *Cubase track preset*.

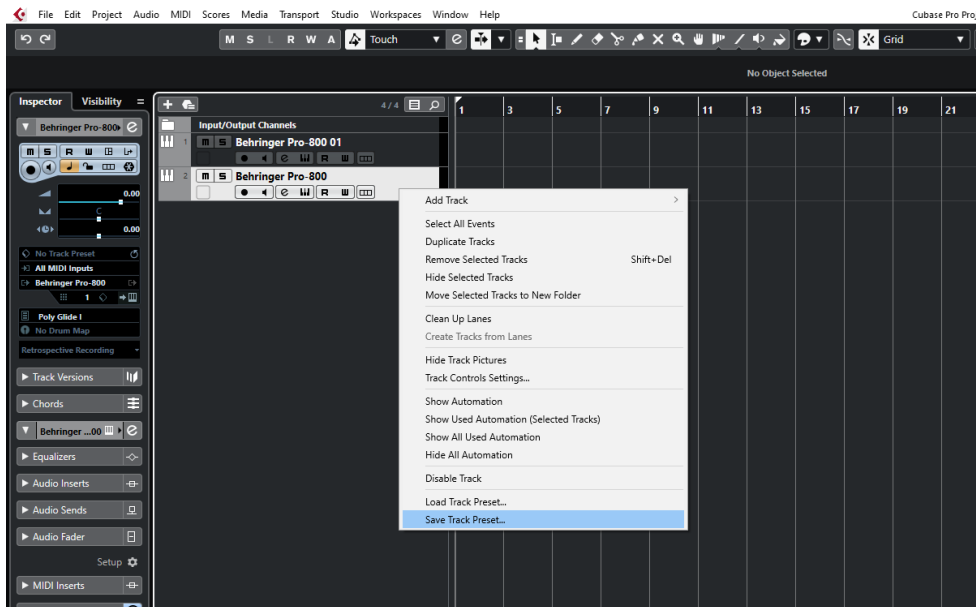
To save as Cubase preset, click on the small diamond to the left of the small camera icon at the top of the plugin window, select **Save preset...** then give a name to your preset.



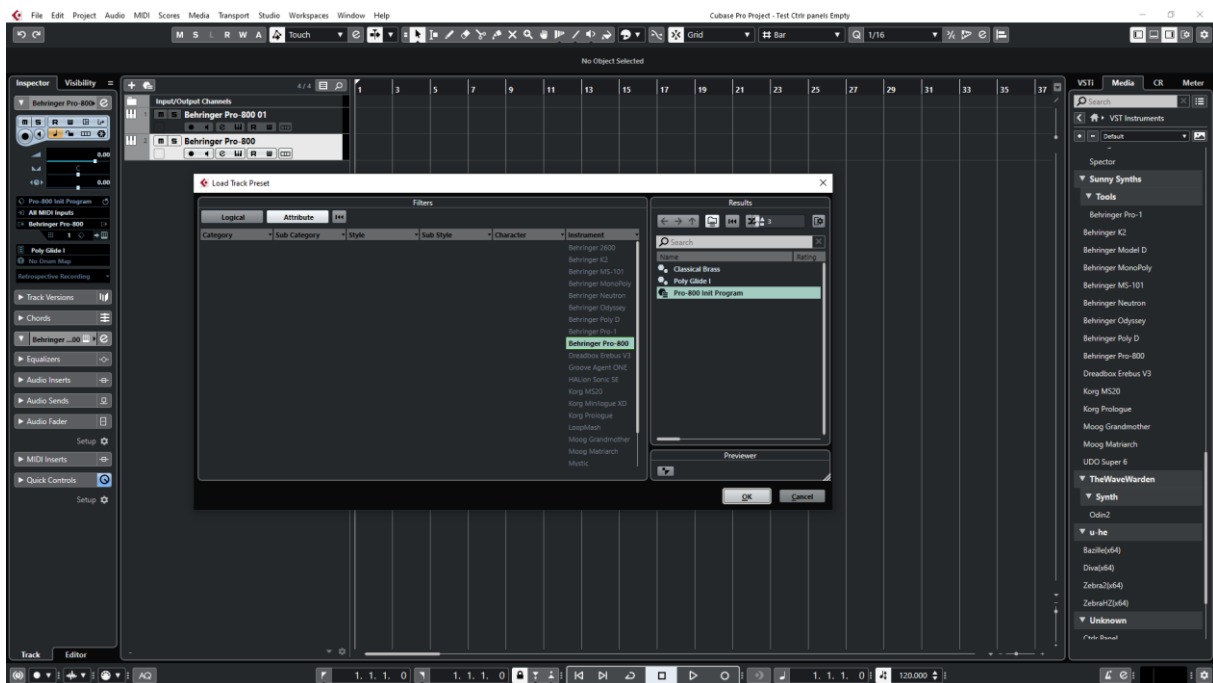
Later on, you can load a preset by using **Load preset** from the same menu (with preview) or you can navigate through your presets by using the small up and down triangle buttons.



To save as Cubase track preset, select [Save track preset](#) when right clicking on a track.

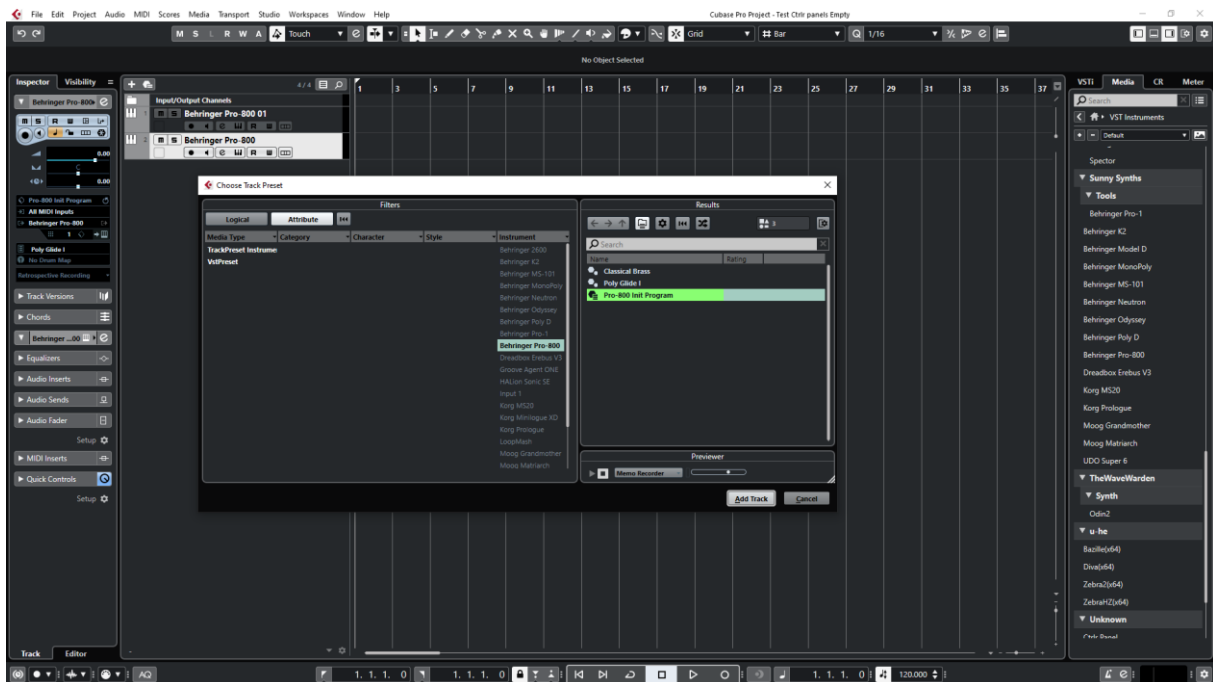
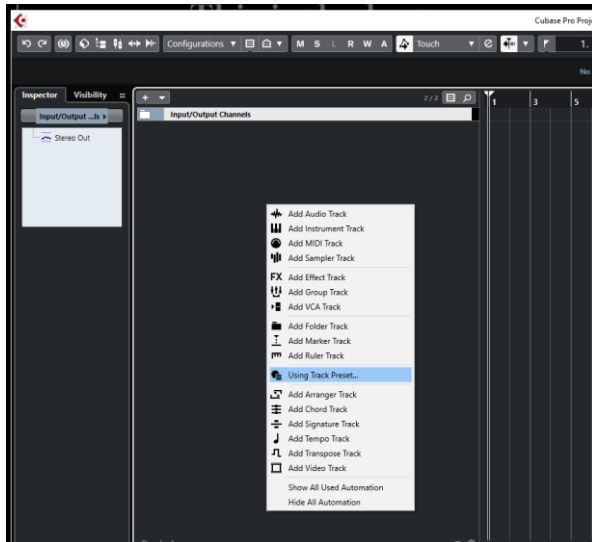


Later on, the content of the panel as is can be restored directly in a new empty track without the need of a Load from the panel by selecting [Load track preset](#) when right clicking on a track.



Creating a new track from a Cubase preset

When creating a new track you can directly pick [Using track preset](#) from the menu. The patch will appear in the panel on a new track without the need of a using Load from the panel



Replacing the preset on an existing track by another preset

Works fine. Just select another previously saved preset at the top left of the plugin window. All buttons will be positioned according to the newly loaded presets.

You can also scroll through the presets with the small up/down buttons.

Cakewalk by Bandlab

Creating a new track

Drag the Pro-800 plugin from the Instruments plugin window (Synths) and drop it on the main window to create a new track.

Click on the instrument icon near the track name to display the panel.



Load a preset from inside the panel and use it as you would do for the standalone version.

When saving the Cakewalk project, the panel is saved as well. It will be restored in the same state (zoom factor, loaded banks if not moved, buttons positions and loaded patch).

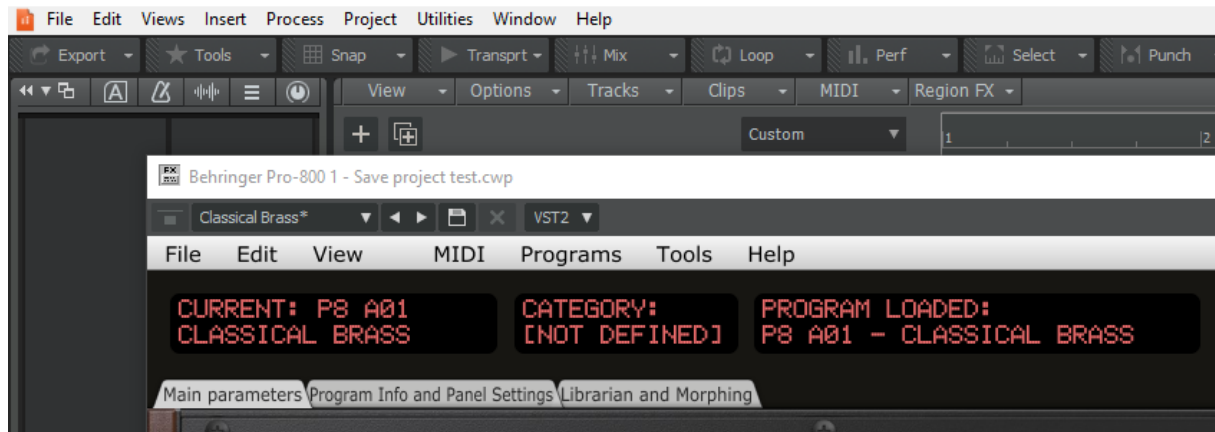
Using several Pro-800 tracks at once

Works fine. To keep several plugin windows opened at once you need to pin them first (pin icon on top right of a plugin window). Patches and windows are restored when re-opening the project.



Saving a patch as a Cakewalk preset

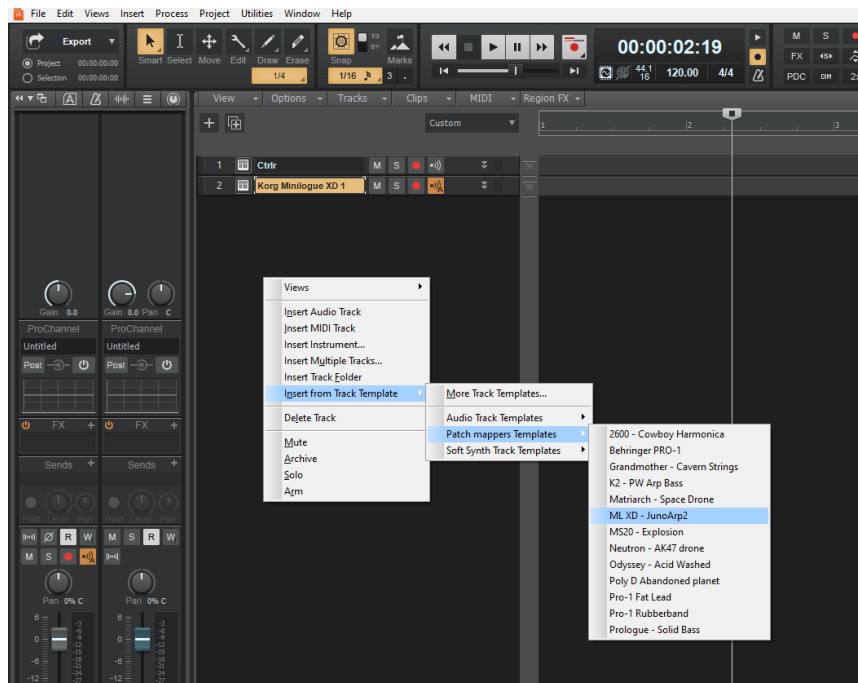
It is possible to save the current patch as a Cakewalk preset by changing the name at the top of the plugin window (here “Classical Brass”) then clicking on the **Save** disk icon.



Creating a new track from a Cakewalk preset

Not found... It seems it is always needed to first create a track with the instrument plugin and then to select a preset (but this doesn't work – see next paragraph).

Another possibility would be to save each preset as a separate track template then to create the track from those track template “presets”.



Replacing the preset on an existing track by another preset

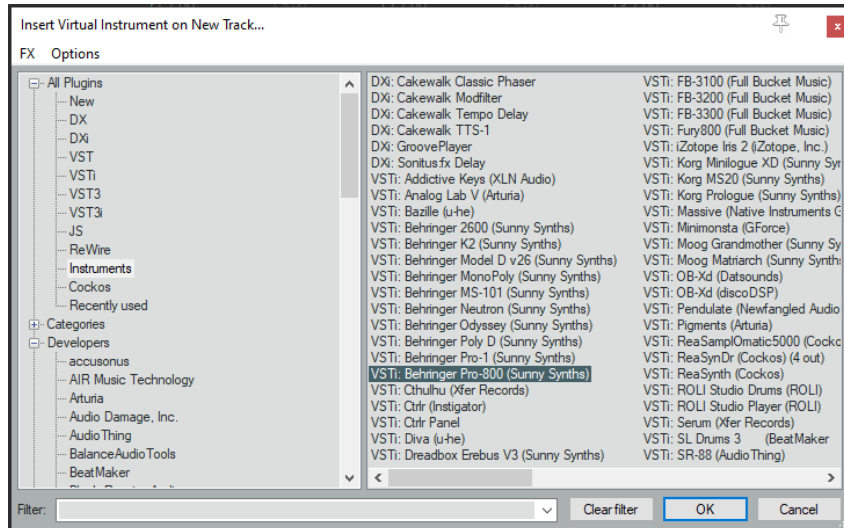
Works fine. Just select another previously saved preset at the top left of the plugin window. All buttons will be positioned according to the newly loaded presets and all labels restored.

Reaper

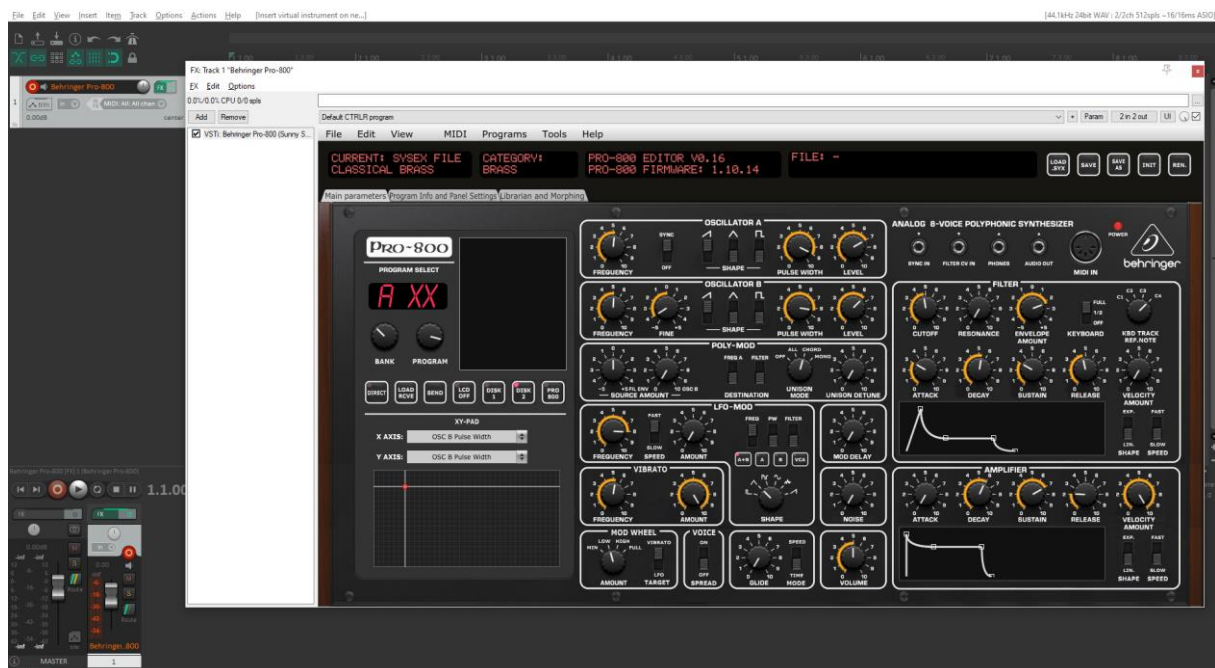
Reaper is available on Windows and MacOS. On MacOS, Reaper is supporting both VST and AU plugin versions.

Creating a new track

Select [Insert virtual instrument on new track](#) in the Track menu then select the Behringer Pro-800 VST from the VSTi category



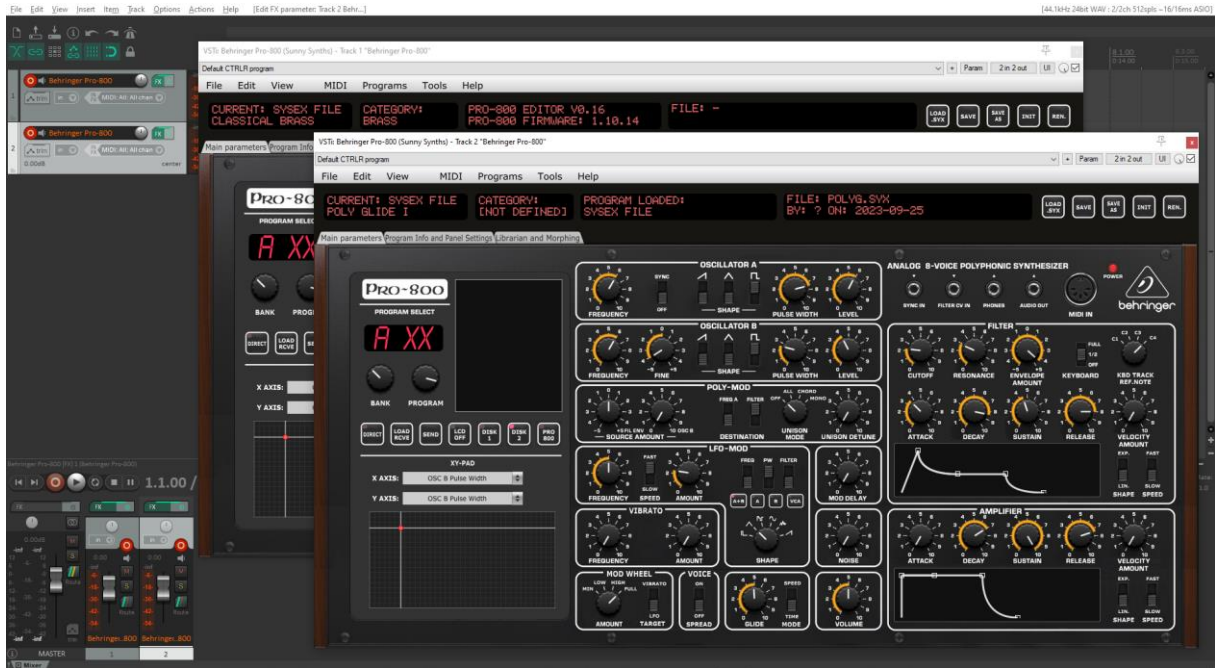
Click on the [FX button](#) to display the panel and use it as you would do for the standalone version (right-clicking instead of direct click gives only the plugin window without the blank side area)



When saving the Reaper project, the panel is saved as well. It will be restored in the same state (zoom factor, loaded banks if not moved, buttons positions...).

Using several Pro-800 tracks at once

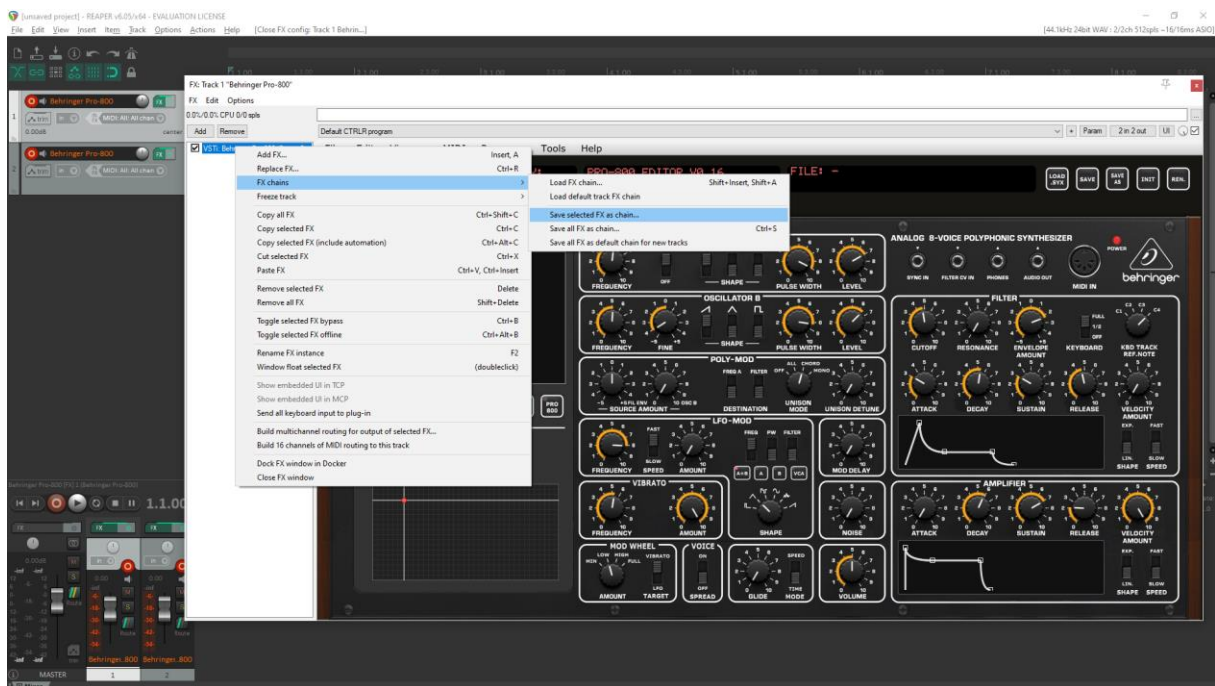
Works fine:

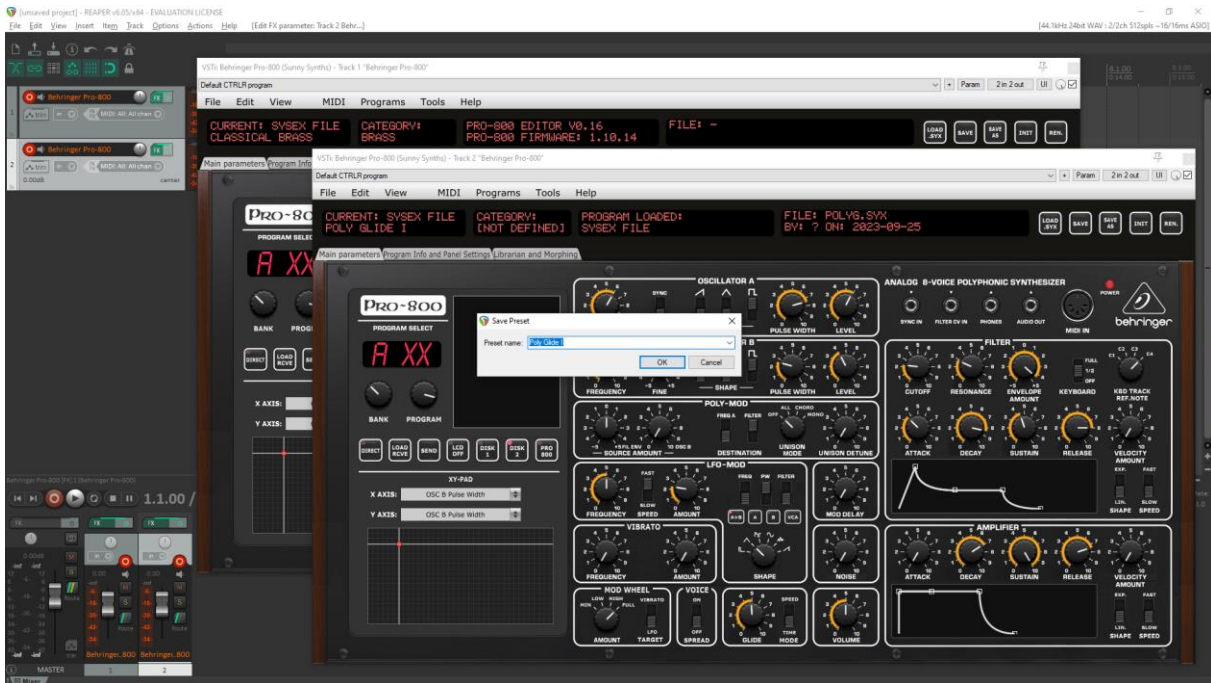


Saving a patch as a Reaper preset

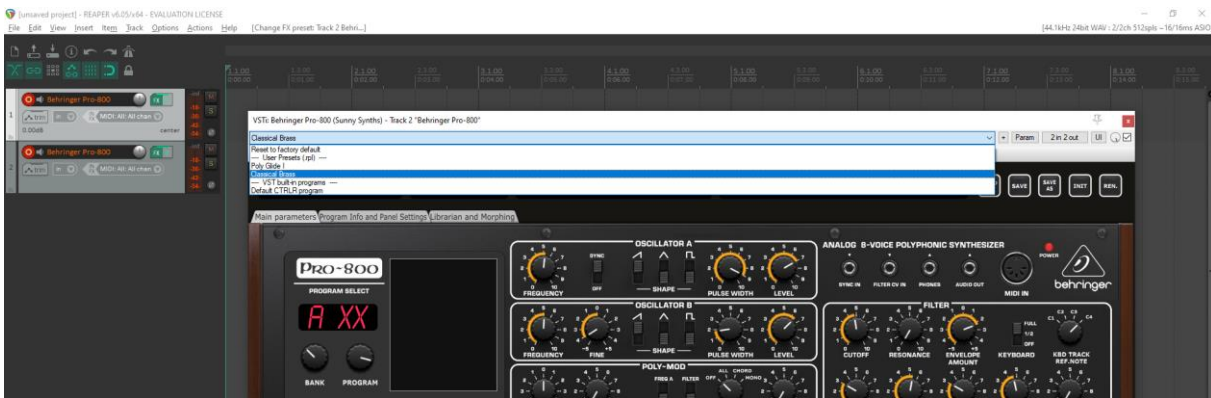
Two different methods are possible:

- Save FX chain – Right click on VST name in white area of plugin window then select **FX chain**
- Save preset - Click on the **+** button in the plugin window then name the preset



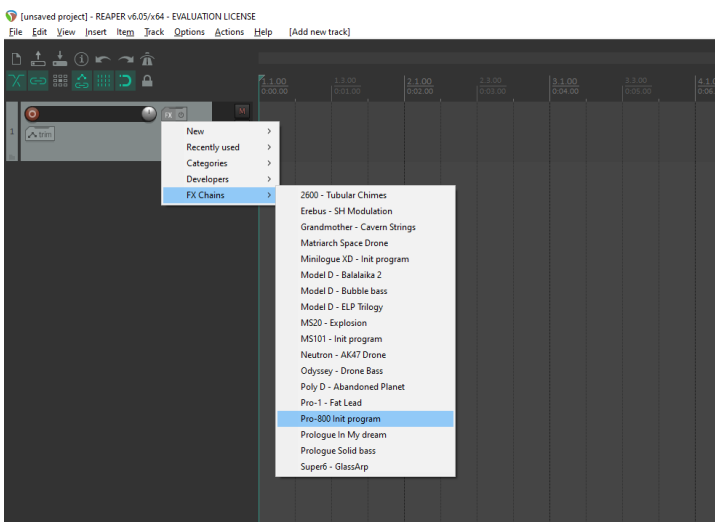


Presets are appearing under User presets



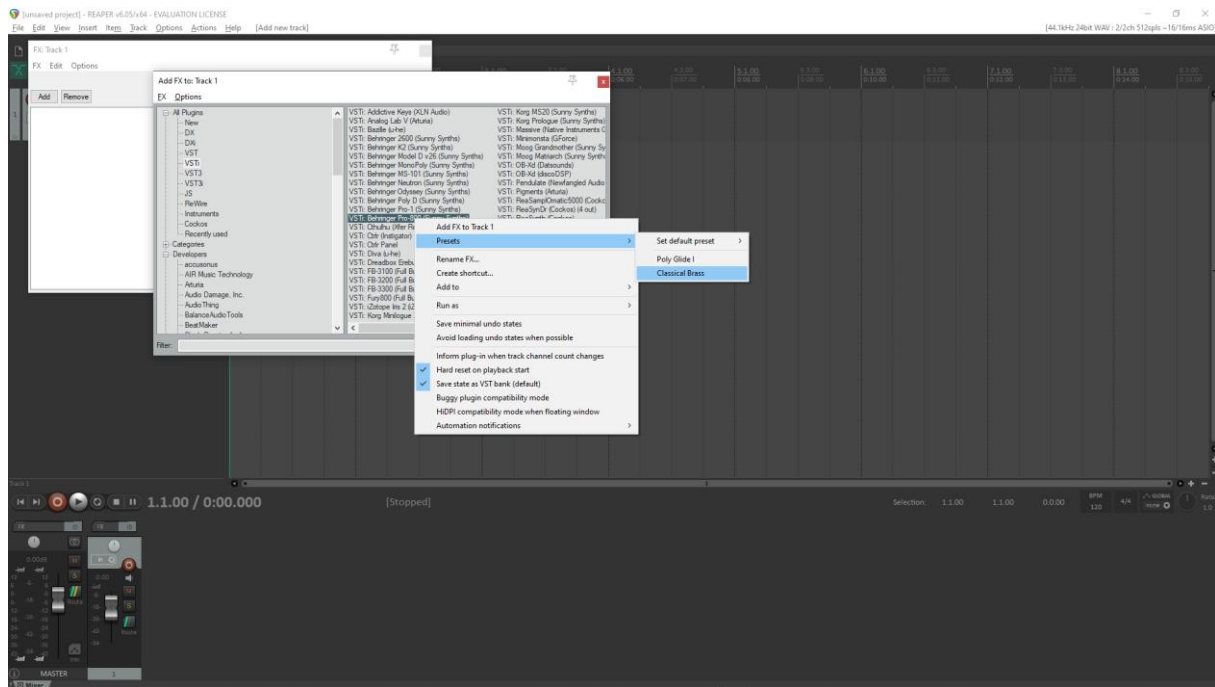
Creating a new track from a Reaper FX chain preset

Create an empty track then right click on grey **FX** button to select a saved FX chain



Creating a new track from a Reaper preset

This is not possible directly but well in two steps. First, create an empty track then click on grey **FX** button to display the Track FX window with the VST plugins list. Then, right click on the Pro-800 plugin and select a saved preset under **Presets**



Replacing the preset on an existing track by another preset

Click on the green **FX** button then in the FX track window, select the FX and press the **Remove** button.

Add the new one as described above.

Ableton

Status: This has been tested in Ableton Live Lite 11 and it is thus expected to work fine in the full versions.

Specific remark

In Windows, it is needed to set the main Midi ports of the Pro-800 synth to OFF in [Preferences](#) and to set the Midi devices and channels in the panel to allow the bidirectional behavior of the parameters that can be exchanged with the synth.

This is not required on MacOS that can handle multipoint communication.

Creating a new track

Drag the Pro-800 plugin from the plugin browser and drop it on the main window to create a new track.

The panel should open automatically. If not, click on the small wrench icon in the small window at the bottom.

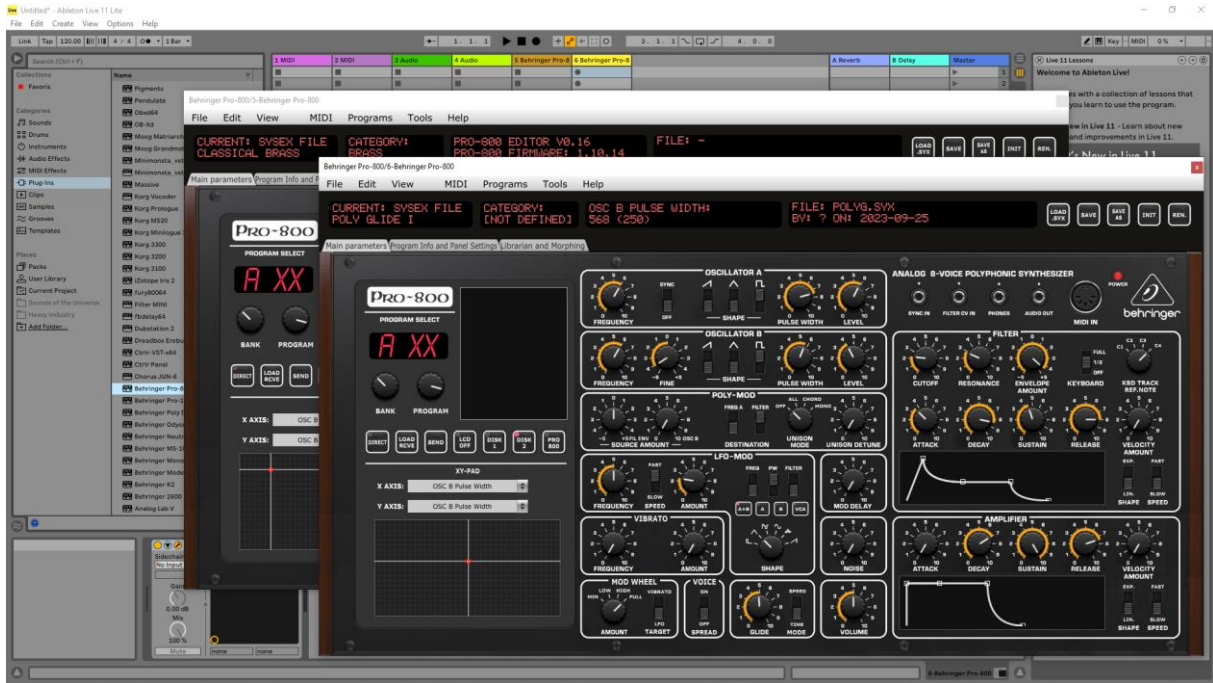


Load a preset from inside the panel and use it as you would do for the standalone version.

When saving the Ableton project, the panel is saved as well. It will be restored in the same state (zoom factor, loaded banks if not moved, buttons positions...).

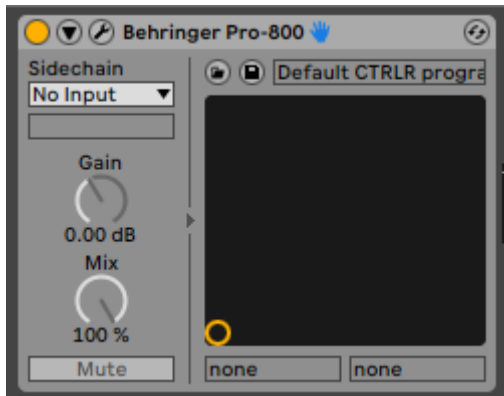
Using several Pro-800 tracks at once

Works fine. To keep several plugin windows opened at once you need to change the masking of plugin setup in Preferences. Patches and windows are restored when re-opening the project.



Saving a patch as an Ableton preset

It is possible to save the current patch as an Ableton **.fxp** preset by clicking on the **Save** button in the small instrument window at the bottom.



Creating a new track from an Ableton preset

Not found... It seems it is always needed to first create a track with the instrument plugin and then to select a preset as described in next paragraph.

Replacing the preset on an existing track by another preset

This works more or less fine. Just select another previously saved preset by clicking on the **Load** button in the small instrument window at the bottom. All buttons will be positioned according to the newly loaded presets and all labels restored.

When testing, I got some extra popup / Load file dialog where I had to press Cancel. Don't know the reason for this.

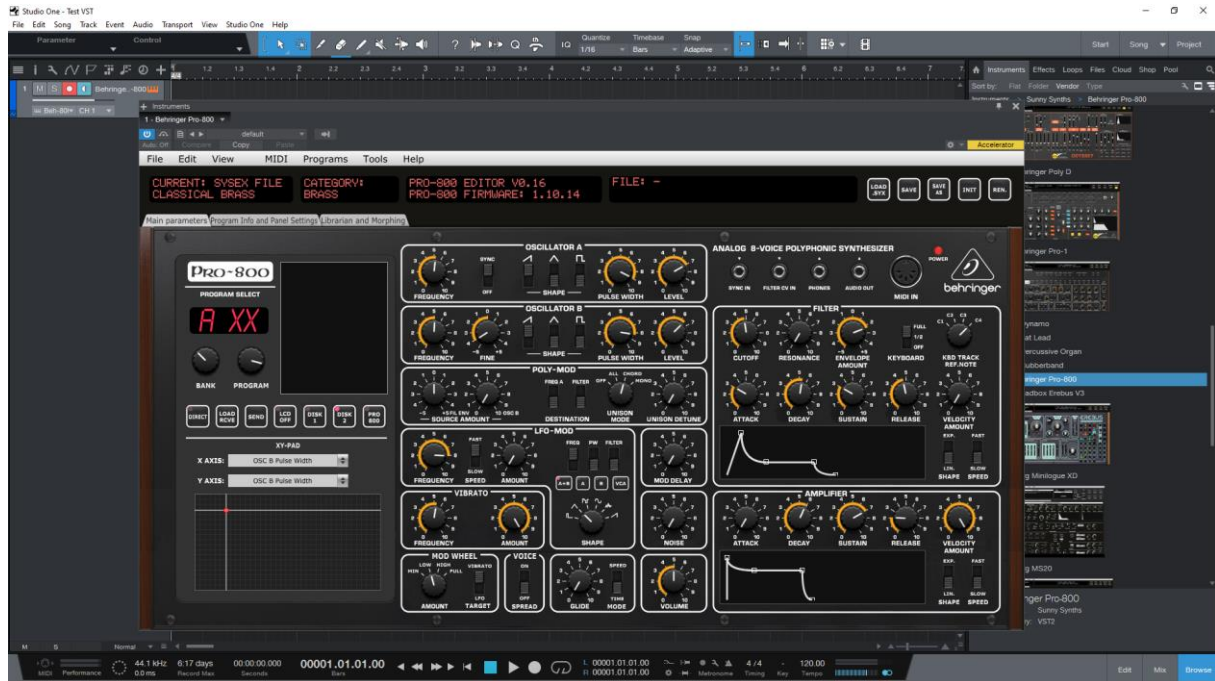
Studio One

Status: This has been tested in Studio One 4.6 64 bits version. The editor doesn't work in the 32 bits version (due to the packing/unpacking functions – let me know if you need it).

Creating a new track

Drag the Pro-800 plugin from the plugin browser and drop it on the main window to create a new track.

The panel should open automatically. If not, click on the small Instrument editor icon on the right side of the track name.

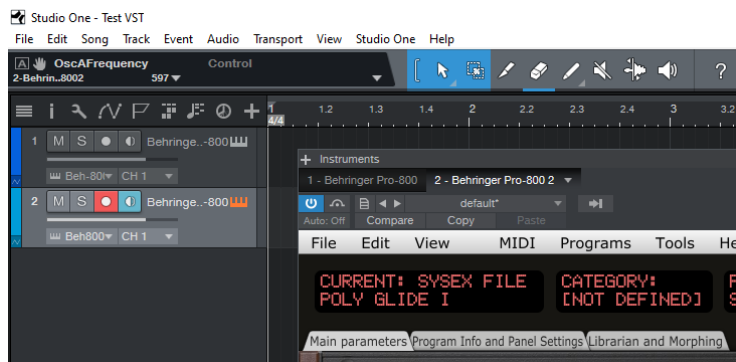


Load a preset from inside the panel and use it as you would do for the standalone version.

When saving the Studio One song, the panel is saved as well. It will be restored in the same state (zoom factor, loaded banks if not moved, buttons positions...).

Using several Pro-800 tracks at once

Works fine. The instrument editor is showing one tab by track:



Re-opening a project saved with several Pro-800 tracks is working fine.

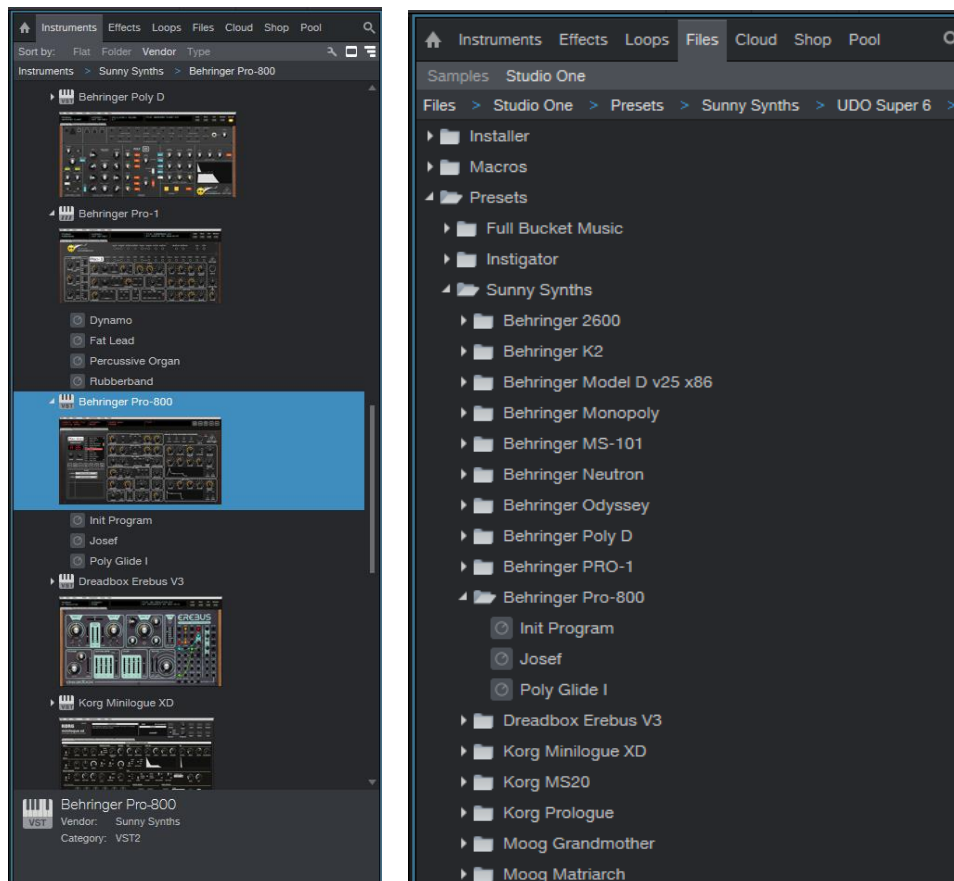
Saving a patch as a Studio One preset

You can save the last patch saved in the panel as a preset in Studio One by selecting **Store preset** in the plugin window preset menu. In the popup menu, input the name of a Subfolder corresponding for example to the sound category.



Creating a new track from a Studio One preset

The presets and their subfolders created with the above method are appearing directly in the browser under the Pro-800 VST name in the Instruments tab or in the Files tab



Replacing the preset on an existing track by another preset

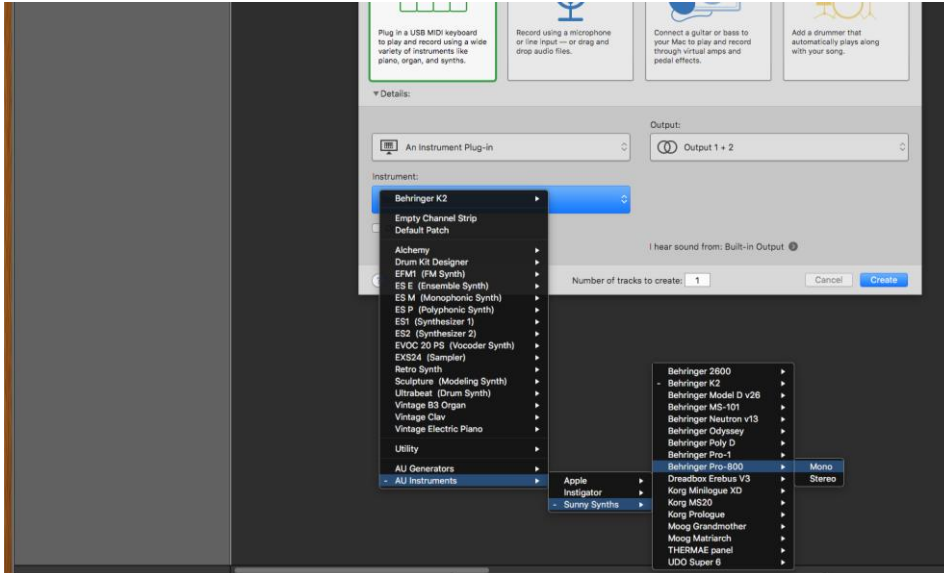
Works fine. Just select another previously saved preset in the pulldown at the top left of the plugin window. All buttons will be positioned according to the newly loaded presets and all labels restored.

Logic Pro X

Logic Pro X is only available on MacOS and handles only the AU plugin version so you must secure to have the Behringer Pro-800.component plugin file in your AU plugin directory.

Creating a new first track

Create a new instrument track and select the Behringer Pro-800 plugin for it (under AU instruments) by clicking on the small Instrument editor icon on the right side of the track Input.



If the panel doesn't open automatically, click in the middle of the track Input to open the panel.



Load a preset from inside the panel and use it as you would do for the standalone version.

When saving the Logic project, the panel is saved as well. It will be restored in the same state (zoom factor, loaded banks if not moved, buttons positions...).

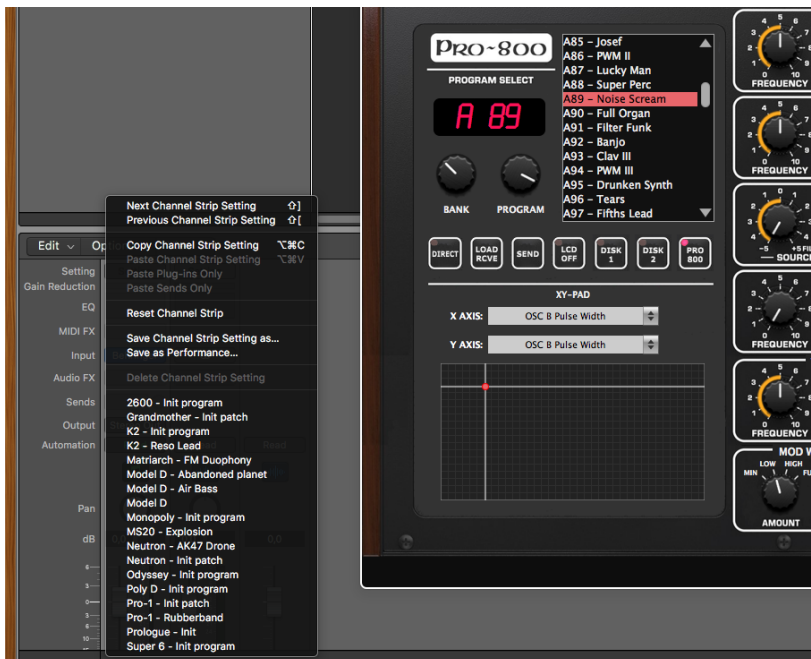
Using several Pro-800 tracks at once

Works fine and can be done by simply creating two tracks with the plugin.



If wished, one can also create a channel strip:

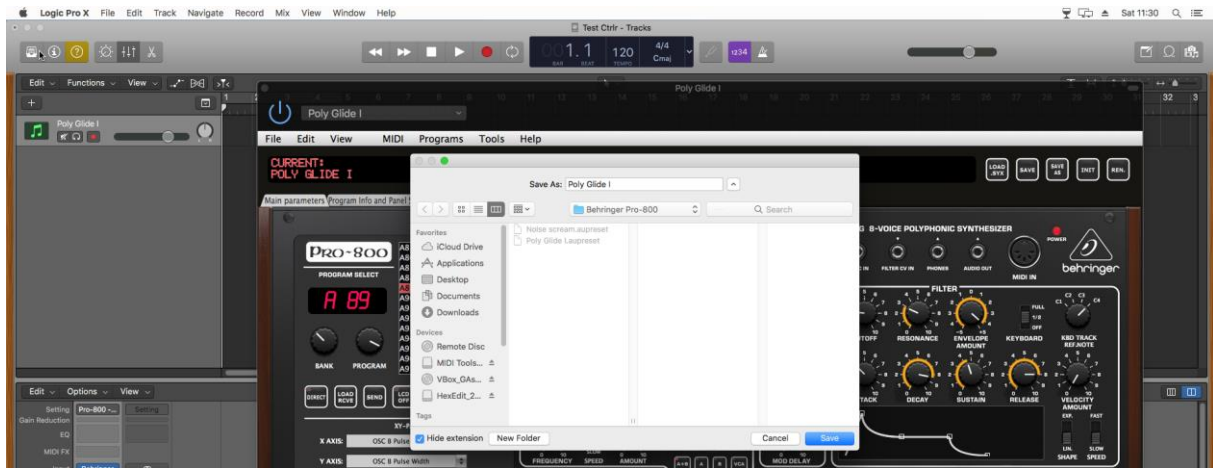
- Save the Init Program as a channel strip preset in Logic by clicking on the **Setting** button at the top of the channel strip in the mixer and selecting **Save Channel Strip Setting as...**



- New tracks can be created based on that Init channel strip (see after) and can then be changed afterwards to other patches with the Load button

Saving a patch as a Pro-800 Logic preset

You can save the last patch saved in the panel as a plugin preset in Logic by selecting **Save As** in the pulldown menu of the preset area at the top of the plugin window. An .aupreset file will be created.



Saving a patch as a Pro-800 Logic channel strip preset

You can save the last patch saved in the panel as a channel strip preset in Logic by clicking on the **Setting** button at the top of the channel strip in the mixer and selecting Save Channel Strip Setting as.... Note that this is different than saving a plugin preset.

Creating a new track from a Logic channel strip setting

This is not possible directly but well in two steps. First, create a new Software Instrument track then click on the **Setting** button at the top of the channel strip in the mixer and select a previously saved channel strip setting.

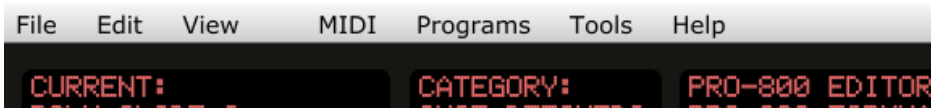
Replacing the preset on an existing track by another preset

Works fine. Just select another previously saved preset at the top left of the plugin window. All buttons will be positioned according to the newly loaded presets and all labels restored.



The main Ctrlr menus

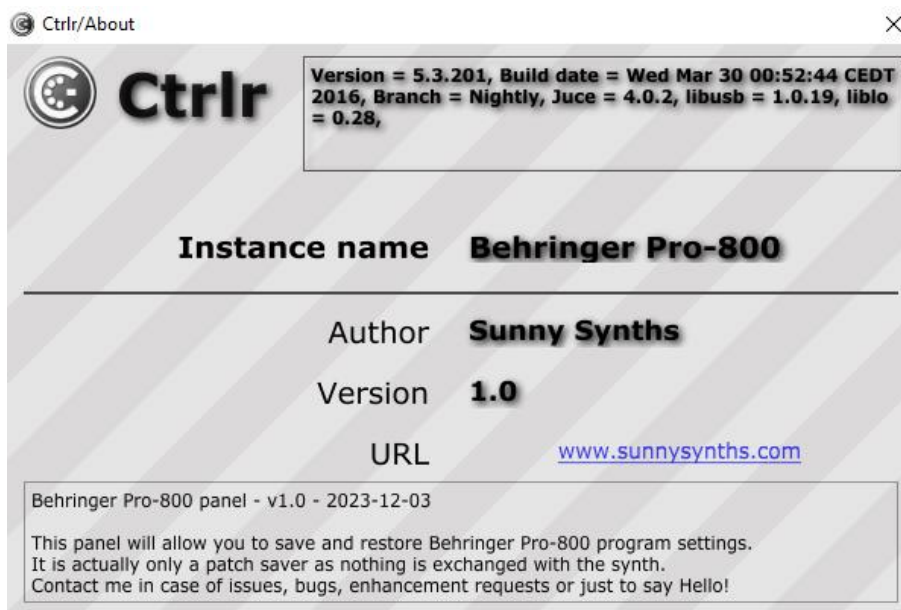
Behringer Pro-800



Actually, not so much is used from the Ctrlr menus...

What you can use is:

- **File** menu: Quit is the only option
- **View** menu: allows zooming the panel in and out by 10% steps
- **Midi** menu: to select your Pro-800 as Output Midi device and to set its Midi channel; to set the Midi Thru (Input->Output)...
- **Tools** menu: use the Midi monitor popup to verify the messages between the panel and the synth
- **Help** menu: displays the About info of the panel



Appendix

Version history

Date	Version	Description	By
2023-12-03	1.0	First version of this manual	Sunny Synths

Pro-800 information

The Behringer Pro-800 product page: <https://www.behringer.com/product.html?modelCode=0718-ABF>

Specific MacOS setup issues

Developer cannot be verified

On MacOS you may get the message that the *“Component or VST cannot be opened because the developer cannot be verified”*.

Go to [System Preferences](#) then [Security and Privacy](#) and click on the [Open anyway](#) button to have the plugin saved as an exception in the security settings.

What you can also do is to open the file using Ctrl + mouse click and it will add the file in the exception list.

For the AU (from a user):

To validate the AU plugin in any OS of Catalina or newer, you’ll need to disable System Integrity checking (the system equivalent of ctrl-clicking the app).

This is done by restarting holding down CMD-R, choose terminal from the top bar menu once logged in to the recovery console, and typing the following command:

```
/usr/bin/csrutil disable
```

It will then stop telling you it can’t be validated and do you want to put it in the bin!

For the VST (from another user)

Just ran the VST on Monterey OS X and it failed. I took my VST and ran 3 commands:

```
sudo xattr -cr  
sudo xattr -r -d com.apple.quarantine  
sudo codesign --force --deep --sign -
```

Opened up my Ableton - everything works like a charm.

Using Midi-OX to download your Pro-800 content

If needed, on Windows, you can use Midi-OX to download all the 400 presets from your Pro-800 and load them as a bank in the panel. On MacOS, the equivalent is Sysex Librarian.

Step by step:

- Download Midi OX from <http://www.midiox.com/>
- Open Midi OX and define your Pro-800 as Input and Output device by selecting **Options – Midi Devices** in the menu
- Click on the 3rd icon or select **View – Sysex** to open the sysex window
- In the sysex window, select **Sysex- Receive Manual dump**. This will initiate a waiting popup so we can get our full dump from the Pro-800
- On the Pro-800, access Global Settings by pressing SETTINGS once then press button 3 to perform a sysex dump (see Pro-800 manual on p42)
- When received, this is appearing in the lower part of the sysex window in Midi OX (Display Window). Select **Display window – Save as** to save the received data into a sysex file like *my_Pro-800_data.syx*
- Close Midi OX
- In the panel, go to [Librarian and Morphing](#) tab, select a bank and load it as described in p32

